

For submission to:



**NFE South Holdings  
Limited**  
Pimento Way  
Freeport  
Montego Bay  
St. James  
Jamaica, W.I.

# **Amendment to Environmental Permits and Beach Licenses Issued**

for

## **The Proposed Establishment of a LNG Terminal and Pipeline Project**

at

**Old Harbour, St. Catherine**

### **PUBLIC CONSULTATION MEETING REPORT**

Held at The Old Harbour Primary School, Marlie Acres, Old Harbour, St.  
Catherine on Wednesday, January 10, 2018

**January 15, 2018**



## **CONRAD DOUGLAS & ASSOCIATES LIMITED**

14 CARVALHO DRIVE, KINGSTON 10, JAMAICA W.I.

(876)929-0023/0025/8824

info@cdaestech.com; cdaestech@hotmail.com; conraddouglasnassociatesltd@gmail.com

www.cdaestech.com

# **Amendment to Environmental Permits and Beach Licenses Issued**

for

## **The Proposed Establishment of a LNG Terminal and Pipeline Project**

at

Old Harbour, St. Catherine

### **PUBLIC CONSULTATION MEETING REPORT**

Held at The Old Harbour Primary School, Marlie Acres, Old Harbour, St. Catherine on  
Wednesday, January 10, 2018

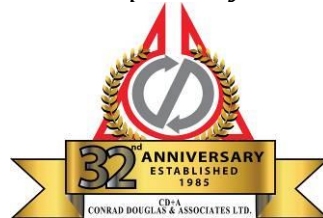
Prepared for:



**NFE South Holdings Limited**

Pimento Way  
Freeport  
Montego Bay  
St. James  
Jamaica, W.I.

*Prepared by:*



**Conrad Douglas & Associates Limited**

14 Carvalho Drive • Kingston 10 • Jamaica

Tel: (876) 929-0023 • (876) 929-0025 • (876) 929-8824

Fax: (876) 960-2014

Email: [info@cdaestech.com](mailto:info@cdaestech.com)

Website: [www.cdaestech.com](http://www.cdaestech.com)

**January 15, 2018**

#### PROPRIETARY RESTRICTION NOTICE

This document contains information proprietary to **Conrad Douglas & Associates Limited (CD&A)** and **NFE South Holdings Limited (NFE)** and shall not be reproduced or transferred to other documents, or disclosed to others, or used for any purpose other than that for which it is furnished without the prior written permission of **CD&A**.

Further, this Document is the sole property of **CD&A** and **NFE** and no portion of it shall be used in the formulation of now or in the future, by the agencies and/or persons who may see it in the process of its review, without written permission of **CD&A** and **NFE**.

## TABLE OF CONTENTS

---

	<b>Page Number</b>
1.0. Executive Summary .....	1
1.1. Introduction & Background.....	1
1.2. Analysis of Questions, Concerns and Issues Raised at the Public Meeting .....	4
1.3. Other Stake Holder Consultations.....	4
1.3.1. Government Entities.....	4
1.3.2. Environmental Non-Government Organization (ENGO).....	5
1.3.3. Fishermen Groups .....	5
1.4. Conclusions.....	7
2.0. Ad Verbatim Notes .....	8

## List of Figures

---

	<b>Page Number</b>
Figure 1: Percentage Community and Institution Representation.....	3
Figure 2. Dr. Douglas interacting with Fisherfolk at Old Harbour Bay .....	6
Figure 3. Dr. Douglas interacting with fisherfolk and community members at Salt River .....	7

## LIST OF APPENDICES

---

	<b>Page Number</b>
Appendix 1: NEPA Approved Agenda .....	I
Appendix 2: Advertisements .....	I
Appendix 3: List of Invitees.....	I
Appendix 4: Sample of Invitation Letters.....	I
Appendix 5: Flyer .....	I
Appendix 6: Town Cry Dates and Voice Recorded Script.....	I
Appendix 7: Register.....	II
Appendix 8: Presentation .....	VII
Appendix 9: Fact Sheet.....	XVII

## 1.0. Executive Summary

---

### 1.1. Introduction & Background

In keeping with the NRCA Act of 1991 and the principles of consultations with the potentially impacted communities within the sphere of influence of a proposed project embodied in Agenda 21, a public consultation is to be conducted among the potentially affected populations and the stakeholders when a significant change in project scope is required after a project has been permitted. The consultation is primarily to obtain the views, concerns and issues, among other things and to address these in any decision to make changes to the project.

In this regard, the National Environment & Planning Agency (NEPA) requires that a public meeting be held in respect of the proposed amendments to the permits and licenses issued for the establishment of an Liquefied Natural Gas (LNG) storage and Natural Gas (NG) distribution network in the Old Harbour Bay.

Using NEPA's guidelines for public consultations for amendments to permits and license, a Public Meeting for the Amendment to Environmental Permits and Beach Licenses Issued for The Proposed Establishment of a LNG Terminal and Pipeline Project at Old Harbour Bay, St Catherine was convened at the Old Harbour Primary School, Marlie Acres, Old Harbour, St. Catherine at 5:30 pm on Wednesday, January 10, 2018. The purpose of the meeting was to inform, educate and more importantly obtain the views of members of the communities that could be potentially affected by the changes proposed for the already permitted LNG project.

As required by NEPA's Guidelines the meeting was recorded *ad verbatim* by a highly qualified and experienced court stenographer. The verbatim report is presented in Section 2.0 below.

Prior to convening the meeting, Notices of the Mandatory Public Meeting were advertised in both the Gleaner (Daily) and Observer (Daily) (see Appendix 2) on two occasions. The advertisements commenced on January 03, 2018 leading up to January 8, 2018. The notice period covered the required 7 days prior to the meeting. The advertisement of the Mandatory Public Meeting was also posted on CD&A's website.

Copies of the documents associated with the request for amendments were placed in the following locations prior to the meeting:

- ✓ Old Harbour Library
- ✓ Old Harbour Bay Fishing Village c/o Sue Beckford
- ✓ NEPA Document Center

The documents were also posted on CD&A's and NEPA's websites.

A Town Crier was used to announce and invite members of the communities to the Public Meeting (through all the communities), which fall within the sphere of influence that could be potentially impacted by the project. This was done on several dates as shown in Appendix 6. Distribution of flyers (invitations) (See Appendix 5) to community members and placement of flyers/invitations on notice boards of public institutions were done concurrently by the Town Crier.

In addition, letters of invitation were delivered to the leaders of relevant institutions and community leaders (See Appendix 3). A sample of the letters of invitation is shown in Appendix 4.

The meeting was convened under the chairmanship of Mr. George Goode, Principal, Old Harbour Primary School. The meeting was guided by a NEPA Approved Agenda (Appendix 1), which was distributed at the meeting.

Mrs. Lacey-Sherrard, Manager, Applications Processing Branch, Applications Management Division, NEPA read a statement on behalf of NEPA.

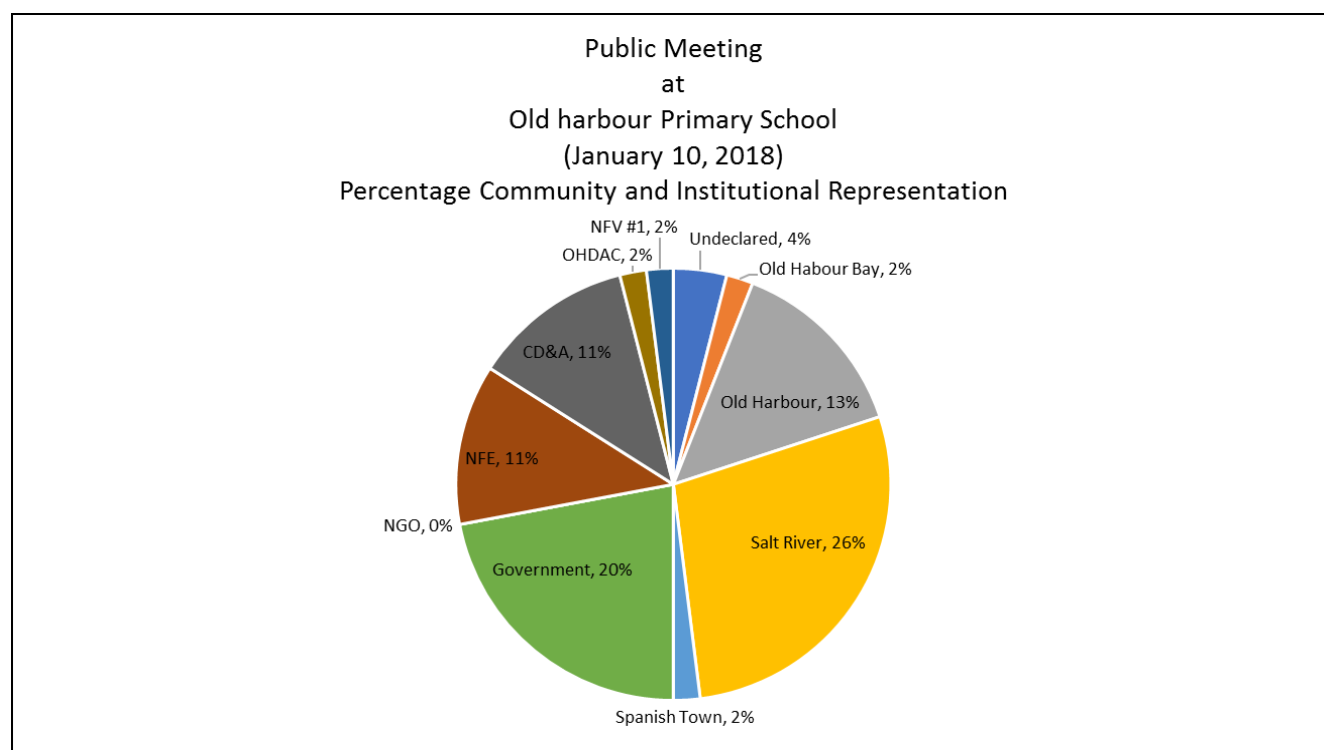
A presentation (See Appendix 8) on the proposed changes was made by Dr. Conrad Douglas, Executive Chairman & Principal Consultant, Conrad Douglas and Associates Limited (CD&A).

Several representatives from the communities along Old Harbour Bay, the National Environment & Planning Agency, the Fire Brigade, NFE South Holdings Limited (NFE),



Fisheries Division, Jamaica Constabulary Force and Conrad Douglas and Associates Limited were present. A Fact Sheet (See Appendix 9) was also distributed at the meeting.

The attendance register is shown in Appendix 7. The representation by community and institution is reflected in the pie chart below. This shows that Salt River and Old Harbour were the predominantly represented communities at the meeting and accounted for at least 40% of the total attendance (55 persons who signed the register).



**Figure 1: Percentage Community and Institution Representation**

The meeting commenced at 5:49 pm and was terminated by the Chairman at 7:55 pm. The salient points of the meeting are listed below and are also illustrated in the pie charts below.

It should be noted that the register was signed by 54 persons; however, the verbatim notes highlight the presence of one person who is not reflected on the register.

## **1.2. Analysis of Questions, Concerns and Issues Raised at the Public Meeting**

The questions, concerns and issues raised at the Public Meeting are provided in **Error! Reference source not found.:**

1. Safety of pipelines
  - a. What are the contingencies for pipe damage?
2. Impact on access of fishermen to fishing grounds
  - a. Are the amendments approved already?
3. Will there be more dredging?
  - a. What will happen to the silt generated?
  - b. Will the reef be damaged by the barge and pipelaying activities?
  - c. Results of sediment testing
4. The project should be allowed to progress as the community wants to work.

## **1.3. Other Stake Holder Consultations**

A number of other stakeholder consultations were conducted during the course of developing this public meeting. These included Government Entities, Environmental Non-Government Organization and Fishermen Cooperatives.

### **1.3.1. Government Entities**

#### **1.3.1.1. Fisheries Division**

A meeting with the CEO of the Fisheries Division, Commander Paul Wright was held on the 2<sup>nd</sup> January 2018 at the Fisheries Division on Marcus Garvey Drive. He was presented with the proposed amendments and he reviewed based on the available nautical maps within his office.

He highlighted that there is no significant objection however he must take the views of the public into account and therefore awaits the findings of the public meeting. The main concern would be the access of the Salt River fisherfolk since the location of the FSRT would be placed further south possibly in proximity to a zone used by this set of fishers. He however pointed out that the FSRT would be out of the direct path of the fishers.

#### 1.3.1.2. Harbour Master

The Harbour Master was consulted with the route change and the new location and a no objection letter has been supplied to NEPA based on the layout supplied to the Harbour Master by NFE.

### 1.3.2. Environmental Non-Government Organization (ENGO)

#### 1.3.2.1. Jamaica Environment Trust

A telephone discussion was held with the CEO of JET on the 8<sup>th</sup> and 9<sup>th</sup> January 2018 regarding the project. An invitation to the public meeting was also extended. JET apologised for not being able to attend the meeting because of other commitments.

JET discussed the need for the route change and requested information on the technology and methodology to be used for pipelaying. This information was supplied via email shortly after the tele-conference.

#### 1.3.2.2. Caribbean Coastal Area Management

A telephone call discussion was held with CCAM on the 8<sup>th</sup> January 2018 regarding the proposed changes to the project. CCAM had no objections to the [proposed amendments and apologised for not being able to attend the meeting.

### 1.3.3. Fisherfolk Groups

#### 1.3.3.1. Old Harbour Bay

A meeting was held on the Fishing Beach in Old Harbour Bay on the 7<sup>th</sup> January 2018 in the morning. The main concern in this consultation was the lack of opportunity for fisherfolk to get work with the developments being proposed. Figure 2 shows the number of fisherfolk present and the level of interaction that occurred. Fact Sheets and Public Meeting notices were distributed at the meeting.



**Figure 2. Dr. Conrad Douglas consulting with Fisherfolk at Old Harbour Bay (Sunday 7<sup>th</sup> January 2018)**

#### 1.3.3.2. Salt River

A meeting was held with fisherfolk and other members of the community of Salt River in the afternoon of Sunday 7<sup>th</sup> January 2018. The fisherfolk indicated that it would be safer to lay the pipeline between the reef. They wanted to know if a barge or ship will be used to lay the pipe. They were informed that a barge will be used. They made it known that a lot of people “live off the sea” so the NFE has to ensure that their livelihood would not be negatively impacted. They also wanted clarification as to the venue of the Public Meeting. They were informed that it would be at the Old Harbour Primary School. Fact Sheets and Public Meeting notice were issued at the meeting. See Register of Meeting in Appendix 7.





**Figure 3. Dr. Conrad Douglas consulting with fisherfolk and community members at Salt River. (7<sup>th</sup> January 2018)**

#### **1.4. Conclusions**

A robust public and stakeholder consultation has been executed for the proposed amendments to the permits and licenses issued for NFE's LNG facilities to be installed in Old Harbour Bay.

The Public Meeting was effectively planned, organized and implemented in compliance with the requirements of NEPA's guidelines and guidance. Various questions and issues were raised by the participants, comments made, and answers provided as far as possible by the consultants. These were diligently recorded *ad verbatim*.

**2.0. Ad Verbatim Notes**

---

**VERBATIM NOTES**  
of a  
**PUBLIC MEETING**  
for  
**THE PRESENTATION OF THE**  
**REQUEST FOR AMENDMENTS TO ENVIRONMENT PERMITS**  
**AND BEACH LICENCES ISSUED FOR THE PROPOSED**  
**NATURAL GAS STORAGE AND DISTRIBUTION SYSTEM AT**  
**OLD HARBOUR, ST. CATHERINE,**  
**HELD ON**  
**JANUARY 10, 2018, AT THE OLD HARBOUR PRIMARY SCHOOL,**  
**ST, CATHERINE, COMMENCING AT 5:49 P.M..**

---

CHAIRMAN       --       Mr. George Goode

Good afternoon, ladies and gentlemen.

It would appear that you are not hearing me at all. Good afternoon, ladies and gentlemen.

RESPONSE:       Good afternoon.

CHAIRMAN:       My name is George Goode, and I am the Principal here at Old Harbour Primary School, for those who are not yet aware. I want to use this wonderful opportunity to welcome each and everyone to this meeting. But just before we go ahead, I want to invite the presence of Almighty God, because we believe that in everything we ought to give God thanks. Without his direction, without his

leading us nothing is possible. And so at this time before I call upon this person I want to say that this meeting is officially called to order.

Of course, it is the NFE South Holdings Limited, New Fortress Energy, which is holding a public meeting for the presentation of the Request for Amendments to the Environment Permits and Beach Licences issued for the Propose Natural Gas Storage and Distribution System to be installed at the Old Harbour Bay in this wonderful parish of St. Catherine.

CHAIRMAN: Ladies and gentlemen, at this time I would like to invite the Reverend Sandra Nembhard, who is the Pastor of the Jamaica Free Baptist Church in the same Community this plant is being developed, Old Harbour Bay. Let us put our hands together and welcome her to come and say prayers at this time.

(PRAYER)

CHAIRMAN: Thank you Rev. Nembhard for such spirited prayer. Indeed we made the presence of the Holy Spirit lead us and direct us. Thank you again Rev. Sandra Nembhard. Ladies and gentlemen, I want to use this opportunity to welcome each and everyone present to this public meeting, it is indeed an honour for all of us, including the organizers of this meeting to have you here.

CHAIRMAN: I want to first say to you welcome to Old Harbour Primary School. Might I add, ***The Old Harbour Primary School.*** **Feel free, feel relaxed.** Yes, I know the environment is looking wonderful at this time. I know it is a cut above the rest in terms of primary schools, in terms of how it is looking and your expectations. But, nonetheless, this is a school that belongs to you, it belong to the community, and we want to say



welcome. But most importantly, we want to say welcome on behalf of the organizers of tonight's event, tonight's meeting rather or this afternoon's meeting. It is still afternoon, right, not yet he evening? So we want to say welcome. I trust that you come with an open mind. I trust that you come to listen, I trust that you come to engage, I trust that you come to ask questions, as the various representatives are here to disseminate the right information to you, so that you can ask the right questions, and so that at the end of this process all of us will be on one accord as we move on with this project.

CHAIRMAN: My purpose here is just to facilitate the event. So let me make the disclaimer, I am not working with the proprietors of this project, I am not working with the National Environmental & Planing Agency, I am not working with

the residents per se, but indeed I must add that I am a resident of Old Harbour, but I am working in my capacity as Principal of this institution to facilitate a process that is important to the development of this community, Old Harbour Bay. To be exact, Old Harbour and its environs, by extension, indeed, the Parish of St. Catherine, Jamaica and the world. This is a worldwide project. And so at this time I'm saying welcome. Feel free to listen, feel free to ask your questions, the various representatives are here. And some of the persons and some of the agencies that are here include the National Environment & Planning Agency, NEPA. Put your hands together for NEPA. Of course, we have Conrad Douglas & Associates Limited that is also represented here. Put your hands together for that agency.

(A P P L A U S E)

And of course the NSWMA. So let me get it right now.

National Solid Waste & Management  
Agency. Am I correct? Let me write it  
down, NSWMA. So it's the National Solid  
Waste Management Authority. Put your  
hands together for me first, I got it  
right.

(A P P L A U S E)

And indeed for the Authority, put your hands together  
for them now. I take that first  
applause for myself.

(A P P L A U S E)

CHAIRMAN: Indeed, we are also having  
representatives from the Jamaica Fire  
Brigade. Put your hands together for  
the fire fighters.

(A P P L A U S E)

We certainly can't do without them. And indeed the  
police, the hard working police. Put  
your hands together for the police who

are represented here.

(A P P L A U S E)

CHAIRMAN:                               The hard working police, the  
hardworking fire fighters, we salute you  
for being               represented here this  
afternoon.

Ladies and gentlemen, I want to ensure that I get this  
one correct. You must give a very big  
applause for this person that I am going  
to introduce to you now. This is one  
of the companies, one of the main  
companies that is involved in this  
project, and it is the New Fortress  
Energy South Holdings Limited, New  
Fortress Energy, and their CEO, no other  
person than the CEO. It is a big thing  
we are having here tonight, you know.  
It is not just the Communications  
Manager that is here tonight from New  
Fortress Energy, it is the CEO of New  
Fortress Energy who is here tonight, and  
I am going to let, ladies and

gentlemen -- so that I don't mispronounce this name, I am going to allow for the right information to go out so that it is very accurate; I am going to allow the CEO, we want to hear the CEO's voice, so I am going to allow him to say his name.

MR. McELMURRAY: Brannen McElmurray.

CHAIRMAN: Put your hands together for that gentleman this afternoon. Wonderful. Thank you very much. Last but by no means least, absolutely no means least, I want to welcome the residents, community members, the heart beat, the ones who make up the community, the life of the community, you the citizens of Old Harbour Bay, Old Harbour and its environs. I know that we should have persons from as far as Clarendon, Salt River, other sections of Clarendon, et cetera, being represented. But wherever you are from, I want you to know that

you are welcome and we are grateful. Our hearts are filled with nothing else but with gratitude that you have taken time out of your busy schedule to be here tonight. Put your hands together for yourselves.

(A P P L A U S E)

CHAIRMAN: Ladies and gentlemen, it is that point of the meeting that we must get to the meat of the matter. I know the reason you are here. We just break for a public service announcement. And so I want to let you know that the Jamaica National Heritage Trust is represented here. Put your hands together for them.

(A P P L A U S E)

So as I was saying earlier, and just in case I have not recognized you or your agency, it is not intentional, it is certainly not intentional and so because it wasn't intentional I am going to ensure that I introduce. And how could we have such

a project, this LNG project that speaks about energy and not speak about the energy company in Jamaica, the Jamaica Public Service Company Limited. Big up JPS. JPS is represented here. I am sure there is another agency that is represented.

PARTICIPANT: ODPEM.

CHAIRMAN: My, my, I have to be very careful now, I am getting nervous as I hear the names, because I realize the meeting is getting bigger and bigger and I have to be very careful about what I say. But, of course, the Office of Disaster Preparedness and Emergency Management is here represented. And I got that name right. Put your hands together for them.

(A P P L A U S E).

So ODPEM is here. Last night we hear about a tsunami, it wasn't ODPEM that gave that information? We are moving on. Any

other agency here?

PARTICIPANT: Fisheries Division.

CHAIRMAN: The Fisheries Division of the Ministry of Agriculture. Put your hands together for them.

(A P P L A U S E)

CHAIRMAN: That agency has to be here, because if you talk about Old Harbour, something fish has to be there, has to be there. So we welcome the Fisheries Division of the Ministry of Agriculture. Other agencies, as soon as we get the information we will disseminate that in a timely manner.

Ladies and gentlemen, at this time we'll be hearing a presentation from the National Environment and Planning Agency, NEPA. So NEPA will be making a presentation at this time. As you know. NEPA is one of those renowned agencies in Jamaica,



and most of us would have been aware that NEPA is one of those agencies that looks out, regulate in a robust way environmental issues as it relates to the island of Jamaica. So they are our eyes and ears; I would say mouth and tongue, everything. And so representing NEPA this afternoon is Mrs. Ruth-Ann Lacy Sherrard. Put your hands together as she come to make this first presentation from the National Environmental and Planning Agency. Thank you.

MRS. SHERRARD: Thank you Mr. Goode. Good afternoon everyone.

RESPONSE: Good afternoon.

MRS. SHERRARD: Mr. McElmurray, Dr. Douglas, this is a statement on behalf of the National Environment & Planning Agency. In May 2016 the National Environment & Planning Agency received applications

from NFE South Holdings Limited for Environmental Permits and Beach Licences for the installation of pipelines for the conveyance of natural gas and hydrocarbon storage at Old Harbour Bay, St. Catherine.

MRS. SHERRARD: An Environmental Impact Assessment was requested and undertaken for the development, and a public meeting was held on the 28th of September, 2016, at the Old Harbour Bay Primary School. Based on the findings of the EIA, and a detailed review and assessment by NEPA and the NRCA, the requisite Environmental Permits and Beach Licenses were granted.

A request for amendment was subsequently received from NFE South Holdings Limited, requesting some of the following changes which are hereby outlined: For the hydrocarbon storage, a change in the location of the Floating Storage Re-gasification

Terminal. And I am sure Dr. Douglas will outline those changes more detailed later. Proposed change of the Re-gasification Unit from a terminal to a vessel. Reduction in the number of breasting moorings, elimination of the platform, reduction in the number of pylons and a decrease in the overall platform.

MRS. SHERRARD: For the pipeline, the elimination of the pipeline for ADO, that's diesel. Increase in the length of pipeline and amendment to the route of the pipeline; amendment to the size of the pipeline; amendment to the construction methodology, from HDD to trenching and amendment to the location of the Metering Station.

While an Environmental Impact Assessment was not requested for the amendment, the Agency requested a Technical Report and the requisite justification for the changes

that have been requested. In addition, the applicant was instructed that public consultation be undertaken due to the nature of the changes and the sensitivity of the area.

The Technical Report and associated documentation were posted at the NEPA Documentation Centre, the Old Harbour Branch Library, the Old Harbour Bay Fishing Village care of Sue Beckford, as well as on the NEPA website and the Conrad Douglas & Associates' website, for public viewing.

MRS. SHERRARD: This public meeting is a preliminary action and no final decision has yet been made on the application. Participants should note that this meeting is deemed important and the outcome from the meeting will be submitted to the Natural Resources Conservation Authority to guide in the decision making process.

The Agency's representatives are present to support the process and to ensure that the presentation is undertaken in accordance with the requisite guidelines. As a regulator the Agency must remain objective and as such the team will not actively participate in making comments or answering questions in relation to the development at this time. However, if there is a need for clarification on what is contained in this statement, we will seek to explain.

MRS. SHERRARD: Finally, of note of the process, a copy of the verbatim minutes of the public presentation is to be submitted to NEPA within seven days of this meeting. The verbatim minutes will be posted on our website. You the public will be allowed ten days after today to submit written comments to NEPA. Upon receipt of the comments they will be collated and sent to the applicant for responses to be provided. Once

responses are received to the Agency's satisfaction, a submission will be taken to our authority for a final decision.

Please note carefully that the final decision on the application is the sole responsibility of the NRCA. Again, the Agency views the presentation and the process as extremely important in the decision making process, and it allows you the community to air concerns, provide comments, opinions and views on the development. Comments should be sent to us via mail at 10 Caledonia Avenue, Kingston 5, or via e-mail at ***applications@nepa.gov.jm.***

MRS. SHERRARD: As a final reminder the document is available for review at the NEPA Documentation Centre at 10 Caledonia Avenue, Kingston 5, the NEPA website, ***nepa.gov.jm;*** Conrad Douglas & Associates' website, ***cdaestech.com;*** the Old Harbour Branch Library, and finally

**the Old Harbour Bay Fishing Village care  
of Sue Beckford. Thank you.**

(A P P L A U S E) .

CHAIRMAN: Ladies and gentlemen, I believe we  
can give the NEPA representative a  
bigger round of applause.

(A P P L A U S E)

Of course that was the statement that was made from  
NEPA, the National Environment &  
Planning Agency regarding the proposed  
amendments. Remember now that  
amendments are changes to something. So  
it means that there would have been some  
pre-authorization or pre-approval  
before. So all that is happening now  
is that this Company is seeking to do  
some amendments to the original or some  
changes to the original thing that was  
approved. So tonight's presentation is  
basically to learn about the various  
amendments or the various changes, and  
so that you can give your input and you

can get your clarifications at this meeting.

CHAIRMAN:

So, again, I want to thank the National Environment & Planning Agency for the input as it relates to this meeting. However, you would have heard that there are some changes, and I am certain that you would want to get some further particulars as to what these changes mean and as to what implications these changes may have. And that is why at this time we have a representative from Conrad Douglas & Associates Limited. This person who will be coming at this time will be speaking to the Environment Permits and Beach Licences Amendment Request for the Proposed LNG or the proposed Natural Gas Storage and Distribution System at Old Harbour Bay in the parish of St. Catherine, of course. And this presentation will be done by no other person than its Executive Director, Dr. Conrad



Douglas. Ladies and gentlemen, I want you to continue to give a listening ear. You have been a very receptive audience thus far and you have been listening keenly so that you can understand exactly what is happening, so that in case there is anything to be clarified you will be given this opportunity to clarify.

CHAIRMAN: So, again, my purpose here is to facilitate the process that you can get the information through the requisite agencies and so that you can ask questions and for clarifications as you so desire.

CHAIRMAN: So, ladies and gentlemen, let us put our hands together and welcome Dr. Conrad Douglas who will be making the next presentation.

DR. DOUGLAS: Thank you very much, Mr. Chairman, Mr. Goode. Ladies and gentlemen, before I proceed I would like to say thanks to

you all for making the effort to come to this evening's meeting. And I do so on behalf of New Fortress Energy Limited your proponent of this project, who has already obtained all the permits for the project in its original form, as well as the licences required for the project. They are represented here this evening by Mr. Brannen McElmurray, who was already introduced; he was asked by the Chairman to introduce himself. And also by Ms. Verona Carter, Vice President for Public Affairs; Mr. Norman Davis a coordinator for the South Coast and Mr. Juan Carlos Yanez, one of the very active project managers on the project, and Mr. Larry Lee who is here just recently to undertake work that will be done on another project that is being done in Jamaica by New Fortress Energy at the Jamalco Combined Heat and Power Station. And this is also advanced in its development and also advanced in terms of of the

environmental management work that has to be done.

DR. DOUGLAS: I'd also like to welcome my own staff, Conrad Douglas & Associates Limited. We have worked assiduously to organize the meeting and to be here, and I would like to underscore, emphasize how much we are heartened to see that you have all taken the time to come here this evening to share with us as we propose these very, very important amendments to Licences and Permits which are already in existence. I just want to stress that if it were the Company's desire they could have simply proceeded and implement, because they are so authorized to do; legally they are holding permits. But because they are so diligent in their approaches to everything that they do in respect of both development and environment, they conducted further research, investigations and assessments, and

have found that even though it will cost them some more capital, as you will see, we will get a better product that is far more sustainable and will enhance sustainable development in St. Catherine, as the Chairman said, and in the communities in Clarendon and in Jamaica and the region in general.

Before I proceed I would like to say how grateful I am for the excellent way in which Mr. Goode has chaired this meeting so far. When we met on the phone and he agreed to host us, we said could you recommend someone who is respected in this community that could chair the meeting. And after further discussions and consultations with him it was obvious that he was the perfect person. And you can see, ladies and gentlemen, from his presentation, and I am sure he will continue in the same vein thus far, he is not only Goode by name, he is good by nature. In fact, he is very, very

good. So thank you.

(A P P L A U S E).

DR. DOUGLAS: We have with us Mrs. Ruth-Ann Lacy Sherrard. If her last name wasn't Sherrard I am sure that she could be called Lacey Goode as well, because she too was very good. And she has been working with us as with all the other agencies, very closely, providing us guidance as we develop this project, as we implement this project.

And so it is not something that is even remote, it is something that is hands on, and to the extent that we have even carried out inspections overseas and evaluated the fabrication and manufacturing of the vessel that will store the LNG with pipeline and so on; that we will be discussing a little late.

Our staff has been working in tandem with NFE and a team of the best engineers in the world, let me stress that, in the development

of this project.

(A P P L A U S E).

DR. DOUGLAS: And we are not chickens in this thing, and I say that myself without gloating, this is our 33rd year since we are in existence. We are the first pioneering company of this kind in Jamaica and the English- speaking Caribbean. Let me just say that for the record.

(A P P L A U S E).

And although we are almost good, like Mr. Goode, we have a lot to give God thanks for, that we are around for so long.

Now, ladies and gentlemen, as I said, let me proceed by first of all asking that we do a few housekeeping matters that Mr. Goode will emphasize at a certain point. (1) We have this meeting being recorded verbatim or word for word. And it is being done by Ms. Beverley Cole, one of the finest court stenographer that the

country has ever produced.

(A P P L A U S E).

DR. DOUGLAS:           And I am saying this, I don't say so with water in my mouth. She has done this over and over and over again and produced excellent records which are accurate and faithful and reflect the proceedings of the meeting, and that is what NEPA wants and you want and everybody wants. So you can rely on it, it is not biased, it is not prejudiced, it is strictly objective and based on some level of empiricism. So thank you again, Miss Cole, for coming. Before I go into the changes essentially though, as Mrs. Lacy Sherrard said, there are a number of legislation and policies which govern the entire process that we are going through, and NFE has ensured that it proceed, that we comply with every single one of them. And this is one of the reasons we are here this evening, because being here is not just a nice

thing to say hello to you and say Happy New Year to everybody, which is such a lovely thing to do, it is in compliance with the requirements of the regulations of the NRCA Act of 1991 and it's Regulations of 1996. It is a clear requirement.

DR. DOUGLAS: And so there are several things which had to be done before we got here this evening. Among them was to advertise the meeting. Only once is required under law, in the public domain, in two newspapers that exist, the Observer and the Daily Gleaner. Not only did we do that once, we did it twice, and we did it because we were just simply working in compliance with the requirements of NEPA. As was stated by Mrs. Lacy Sherrard, the submissions to NEPA in the form of the rationale for or the reason, if you prefer, for the changes, have been put in the communities in Old Harbour, in Salt River, in the Parish



Library, at the Old Harbour Bay Fishing Village, and it is also on the website of NEPA, and it is on the website of Conrad Douglas & Associates Limited. Meaning that anyone who wishes to visit the website and carry out further research can do so freely within the time remaining. In addition to that we had a town cryer who cried faithfully announcing -- I don't mean shedding tears really -- announcing the meeting throughout the length and breadth of Old Harbour Bay, Old Harbour, all the roads and avenues and streets and lanes therein, since last Sunday. And he did the same thing in Salt River, which is on the opposite side of the bat.

DR. DOUGLAS: And in doing so he handed out letters of invitation, copiously, to a number of residents and citizens. Further to that, in doing our preliminary work in Old Harbour Bay, which we started from about three weeks ago, we went down to

the Bay, and there is a gentleman who is a DJ, he operates a sound system on the beach, and we provided him with the information and he said yes, he will continue to announce it to all of the fisher folk down there for the entire time leading up to the meeting today. So we have covered our bases exhaustively and extensively in the preparation for this meeting. The newspaper, it required that we publicized just once but we did so twice, not just once, because we wanted to make certain that the public knows and that you are here to attend.

DR. DOUGLAS: Further to that, ladies and gentlemen, we compiled a list of special invitees and stakeholders, and delivered electronically by e-mail, and in hard copy form, all of those letters of invitation to them. And so several of the agencies represented here this evening came from either one of those

media sources, but also most importantly in their particular case, because of the invitations specially extended to them. So we have covered that process and we are still some way to go with this evening's process.

DR. DOUGLAS: Now, when we proceed after this meeting, the presentation, we will hand you over to the Chairman once more and he will tell you how we will proceed in an orderly manner with the question and answer session. And I can tell you faithfully, I don't want to steal his thunder or usurp his authority, as we sometimes say, what each one of us, the comments or questions will do, and how they will be directed through him and what will be done in terms of responding as best as possible, and he will do so in respect of the comments and questions. So having said all of that and without further ado let me proceed to the changes that are being proposed

to the existing Permits and Licences which already authorize New Fortress Energy South Holdings to proceed as permitted and already licenced, which they so desire.

DR. DOUGLAS:           So will someone kindly turn off the lights so that the projections can be clearer. And I promise you to do this very quickly and efficiently and effectively, because we will have time for you to ask questions and make your comments, provide answers, and we can always go back so any part of the presentation if you wish.

DR. DOUGLAS:           Now, ladies and gentlemen, as the Chairman told you, this is a public consultation meeting, and this is the biggest one. However, we have had other public consultations with other stakeholders before we got to this point. We consulted, for example, with the fisher folk at Old Harbour Bay, and

we faithfully recorded who were present and the kinds of interest and concerns, if any, that they might have.

We also consulted, for the record, with the fisher folks at Salt River, at Welcome Beach. Several of them were there, several of them are here this evening represented, and several from the Old Harbour Bay Fishing Village as well. In addition to that, I bring apologies from Jamaica Environment Trust, with whom we also consulted, and with whom we share information. JET, as you know, is one of Jamaica's foremost environmental non-Government agencies, a pioneer in their field. We also consulted with Caribbean Coastal Area Management Authority, another well known and highly reputable environmental NGO, and who has special powers in dealing with the management of the Portland Bight protected area in which the project is located. They send apologies as well,

because they are already familiar with the project and they are so stretched and busy they cannot make it here this evening, but we are sharing information with them and they are examining the documents on the website as we proceed. So I just want to let you know.

DR. DOUGLAS: So to go back to what is in front us: This is the big consultation of stakeholders and agencies this evening. The public meeting is for the purpose, the request of amendments to Environmental Permits and Beach Licences issued to NFE South Holdings Limited for the establishment of a LNG terminal and pipeline project in Old Harbour, St. Catherine. That's the purpose. And the proponents or the developers of project, as was previously explained, they are NFE South Holdings Limited, and they are much more better known by most of us who are working, as New Fortress Energy. And we are

their Environmental Consultants, Conrad Douglas & Associates Limited, as the Chairman told you earlier.

Now, by way of introduction, NFE South Holdings Limited was chosen by the Jamaica Public Service Company limited (JPS), who is represented here this evening, to supply natural gas, NG, to Harbour Power Station plant which is now under construction. This plant will be a gas fired plant, which is far more efficient in every way. In terms of electricity generation and also in terms of environmental friendliness with better quality of emission. That plant was separately permitted by the National Environmental and Planning Agency, and it is under construction at this time.

DR. DOUGLAS: Now, NFE South Holdings Limited is an affiliate of New Fortress Energy and it is sponsored by Fortress Investment Group. Fortress Investment Group is a

highly diversified global asset management firm with approximately \$70.64 billion of assets. That's a lot of money. If the whole nation had that I don't think the Cabinet would be in retreat. Assets under management and an experienced investor in transportation, infrastructure and energy assets around the entire world. Let me just say that, so far, in terms of what New Fortress Energy is investing in Jamaica -- and Mr. McElmurray can correct me and elaborate -- they are investing about US\$1 billion in Jamaica, in support of the transformation of the entire energy sector, which is based on the Government of Jamaica energy policy mix. So that's not any chicken feed.

(A P P L A U S E).

DR. DOUGLAS: If you use the conversion rate of \$125 to one, that's JA\$125 billion, ladies and gentlemen. That's no small amount of money.



(A P P L A U S E) .

They were founded in 1998. New Fortress Investment Group was the first New York Stock Exchange listed alternative asset manager, the first. So a lot of pioneers are around here, ladies and gentlemen. And they are moving with the greatest efficiency and alacrity to make this investment which has implications for the environment, climate change, human health. So it's a planetary worldwide contribution, as the Chairman pointed out earlier.

DR. DOUGLAS: Headquartered in New York, Fortress has 1,130 employees across 15 offices worldwide. NFE has a strong commitment to environmental protection and corporate responsibility to ensure that their projects meet all the regulations while maintaining as small as possible project footprint with as little risk of environmental damage as possible. This

is one of the reasons we are here this evening, because they are seeking better changes, greener changes, which is based on Green Environmental Management and Green Environmental Engineering principles, state-of-the-art, best practice throughout the world.

The different components of the project or the parts of the project, major parts are as follows:. The permits and licences have been issued by the National Environment & Planning Agency for the following four major component:

- (1) Storage of Liquified Natural Gas at sea in Portland Bight. Docking facilities to be installed to host the storage vessel.
- (2) Re gasification of Liquified Natural Gas to Natural Gas on a platform at sea in Portland Bight. The platform is to be installed to host the re-gasification unit
- (3) Conveyance of Natural Gas through steel pipes to the Jamaica Public Service Company Natural

Gas Fired Power Plant on land at Old Harbour Bay, which is now under construction. The pipeline is to be laid for natural gas delivery. And this is on the sea floor and also the platform; and pipeline to be trenched and directionally drilled, which was originally permitted in the permits and licences.

- (4). They must measure the amount of gas that they sell to Jamaica Public Service Company, and for this reason they have to provide a Metering Station which is built on shore to measure the volume of natural gas that is conveyed to the Jamaica Public Service Company. As Mrs. Ruth-Ann Lacy Sherrard told you earlier on, an EIA was submitted based on preliminary designs to execute these components of the supply network. The amendment is being requested for the above 1, 2 and 3 components. It's there evident.

DR. DOUGLAS: Three environmental permits which are still in force: That's what we mean when we said they could just simply go and build it if they wanted to, without going through this process. And these are as follows: These were issued by NEPA. Environmental Permit # 2016-14017-EP00252 - Construction of an LNG Terminal - issued 9th December, 2016.

environmental of Permit #2016-14017-EP00251- Construction of an LNG and Automotive Diesel Oil pipeline - issued 20th December, 2016.

And I must say here Mrs. Ruth-Ann Lacy Sherrard, they are maintaining that ADO pipeline for which a permit already exist. So in the process it might have been mistakenly communicated that an amendment is being done. So for the record and the clarification.

DR. DOUGLAS: Environment Permit  
#2016- 14017-EP00416-Wetland  
Modification issued on the 20th of  
December, 2016. And there are three  
Beach Licences as follows: Beach  
Licence No.: L3622A - Placement of  
Pipelines issued on 20th December, 2016;  
And a second Beach Licence No.  
L3622B - Placement of 78 Pylons issued  
20th December, 2016. And Beach Licence  
No. L3622C - for Capital Dredging of  
some 557 cubic meters of material from  
the sea floor.

So they have all of these permits and licences in  
hand, and as I said they could have  
simply proceeded without doing anything  
further, except to comply with what the  
regulators want in terms of what the  
policy and regulatory framework  
governing the project says.

Now, what are the proposed changes or amendments? As  
the Chairman says, these are in black,

b-l-a-c-k, and in green follows the changes. The location of the unloading and storage facility is being moved a little bit further south by some 1.5 Kilometer of the original location. And the purpose of this is to allow better and safer manoeuvrability of ships coming in to offload LNG. Now, obviously, this kind of thing cost money, more money, because it means you are buying more pipeline, it means you are doing more trenching in changing the route and so on and so forth. It's being done at greater cost. And it was not just done arbitrary nor willy nilly, it had to be preceded by extensive and intensive investigation, which bear their own set of capital cost in order to guide decision making and to guide engineering suitable, using green principles to meet the objectives of the project.

DR. DOUGLAS: The next change, the type of liquefied

natural gas storage facility - the Floating Storage and Re-gasification Terminal to replace Floating Storage Units, as was explained by Mrs. Ruth-Ann Lacy Sherrard, and you will see that as we proceed.

DR. DOUGLAS: The third one is the location of the re-gasification unit. The Re-gasification unit was located on a storage vessel and not on a platform external to the vessel. That's the change, it's greener, it's better.

The route for the pipeline: The pipeline to go through or traverse a gap in between existing reef rather than going under the reef. There are risks with going under the reef, and so some of these, for example, would involve drilling the reef itself in order to locate the substrate or bottom of the reef, where it ends. That's what it means. In order to determine how far under you would have

to go. In drilling the reef you could have impacted the reef itself, and when you are laying the pipeline under the reef, in doing so you could experience certain challenges, and if you were successful in doing so, which it could have been, it also means that if there are earth tremors you could have problems if the reef started to shift. Fact. Just last night you all heard about the tsunami with some 7.6 on the Richter Scale, and just last night the nation, the entire Caribbean and parts of Central America were alerted about the possibility of a tsunami. These things are real and these things take these things into account.

DR. DOUGLAS:                   The pipe laying technology: The pipeline is to be trenched for its entire length instead of being drilled beneath the sea floor in a section under the reef.



The location of the Metering Station, it has been realigned. And this really does not require any very serious amendment because the same general footprint or location was already covered by the Beach Licence.

DR. DOUGLAS: The logistics of the management of Automotive Diesel Oil: JPSCo will manage ADO storage. That is Automotive Diesel Oil.

Now, to show you some graphics, this is what Portland Bight bay looks like. Can you read it, is it clear?

RESPONSE: No.

DR. DOUGLAS: All right, let me try to explain. When you look at it you will see something written in red. That's the original location of the terminal. When you look further beneath that, this is

now the proposed new location. That's the change. If you look on this map you can see two major communities, one is Old Harbour Bay to the north, where the JPSCo Power Plant under construction and the original one operated by heavy fuel oil exist and is in operation, and then the Salt River Bay -- and that is why the Salt River people are here this evening -- which is a little bit further to the south and inland. So the changes from being further inland, closer to Old Harbour Bay, being 1.5-kilometer, a bit further south.

DR. DOUGLAS: The next change which is illustrated here, you will see a dotted line from the original station, going straight in under that reef, that structure there, and going to the JPSCo Old Harbour Power Plant. If you look to the right of that, ladies and gentlemen, you see another dark black line, that is the new routeing or change or amendment or

alignment to the pipeline. And instead of going straight through up and drilling under the reef, putting the reef at risk, putting the pipeline at risk, putting the general environment at risk, they are going through that opening in the reef, going up on the sea floor through trenching, and then the pipeline will be landed or make land fall up to the Metering Station. That's the metering station. (Indicating on slide)

DR. DOUGLAS: Thank you so much Mr. Beckford for your kind assistance. Next slide, please.

Now, if you prefer aerial photography or satellite imagery, this is what it looks like. What we just described, this is the Floating Storage and Re-gasification Terminal and its moorings. And this is an artist impression of it on a Google Earth image. Now, in respect of the pipeline you can trace it going up. The

new routing is going through that opening in the reef, between the reef, which can accommodate it, and for which we have existing pipelines on the sea floor. This is being done instead of drilling under that reef, which was what was originally proposed and permitted.

DR. DOUGLAS: So now we come to the concept or artist impression from the aerial photography and satellite imagery, which were permitted on the amended layout of the LNG or Liquefied Natural Gas storage facility. To the left is what was originally proposed and permitted. And you will see the mooring facilities to the right at the bottom here where the arrow is showing. And you will see where we would have had storage, ships coming in and storage of LNG.

DR. DOUGLAS: The changed situation is to the right. You can see that the footprint has been

significantly reduced. Instead of having 11 structures berthing upon it,, for example, we now have just nine, and it is smaller and the footprints have been significantly reduced. I will show you the drawings in the next slide.

Firstly, this is the artist's impression. If you feel like having a nice day sailing through Portland Bight, this is what the terminal will look like. And you can see we have already claimed it with our beautiful Jamaican flag, which claim gold medals throughout the world in everything that we participate in. Similarly, this is a gold medal project, ladies and gentlemen. Just so you can get a visual impression of what this will look like.

DR. DOUGLAS: Now, as I said, further investigations were carried out by New Fortress Energy at great expense, tremendous cost, using sonar imaging or bouncing off sound

images off the ocean floor to determine what exist. And most importantly, you can see that those two long lines are pipelines which are already there and they are going through the opening between the reef. If you want a better idea as we do that, look to the right bottom side and you see an image which is not a square, more like a rectangle, showing what that looks like. But, importantly, you will see that there are pipelines there, that there is an opening there, and even more importantly that space allows for the manoeuvring or manoeuvrability of the barge that will be used to lay the pipeline.

DR. DOUGLAS: So let us proceed, and we will explain. . Now, I want you to look to the left and you will see what is a scale that is illustrating depth in terms of colour. And you will see from the very top, you are seeing minus three, which means minus 3 meters below sea level.

And you will see that that top 3 meters minus below sea level is color coded in red. And if you go to the bottom of it, down to the purplish, bluish section, you will see minus 3 meters depth. Now, that's a whole lot of distance, ladies and gentlemen. Please, beg yuh don't bother try go out there and swim feel style if you don't have to, but if you want to go fishing, why not, unless you are a professional diver as we have on our team.

Now, what this is saying is that as you come down minus four there is the orange, then you go through a yellowish light green transition, 5 meters; then 6 green, to 7 greener, 8 bluish -- that's meters, that's depth. Then we have 9 and then we have down to 10. Certainly, if you want to relate this image to that scale, what you would say is what is between the reef at the closest part to that vessel which is depicting the barge or

showing the barge is at about 3 meters. Then if you go in the middle where that model or barge is being shown, you will see that it's at a depth of about 8 meters. That's what it means. A lot of us are still not too familiar with imperial system and metric system, but 1 meter is roughly 3 feet, more than 3 feet. So it means that if you multiply your eight by three you are talking about deeper than 24, deep, deep, deep. I am over 6 feet, I can't stand in the narrowest part of what is shown there, without being covered over. Just to give you an idea.

Now, so what it means is that you will see a purple line that is going through it. That purple line, that is actually the pipeline, and you will see the bluish area, which means that it is being laid at a depth of just about 8 meters between that opening in the reef. Okay. And the barge that is being used to do



it, going through the gap or traversing the gap, can easily manoeuvre through that reef without damage to itself or without damage to the reef.

DR. DOUGLAS: Now, we showed that there are pipelines that are already existing in that opening or gap in the reef. And those pipelines, we might have to lay the gas pipelines across some of them, two of them, as we proceed to take it inland. What this is simply showing is that there is a technology or a methodology using mattings to cover the pipelines existing there before you put the new pipelines on top of that. Mr. McElmurray will explain further any such thing if it needs be as we proceed. And these mattings are safely anchored, securely anchored and yet flexible concrete. And that is being shown through what is there as a section.

Now, to show you a drawing of the moorings or docking

facility in blue and in green. Blue was what was originally proposed. The change is what is now shown or depicted in green. I won't spend too much time on that, that's obvious.

DR. DOUGLAS: This is another drawing which shows the change a bit better. You will see from the top one that is what was originally proposed, and you will see the bottom one, a much smaller structure which is now being requested for the change, a much greener, much more environmentally friendly smaller structure. If you look at the bottom you will see the original footprint of 3,121 square meters, and the new footprint is just a little bit above one-third of that or 1,290 square meters. That is what you call Green Environmental Engineering. At least the things that go with it.

This is the Metering Station, and you will see if you

look, it was at another location, not totally clear. But what is there now, we are asking for the change, is the green area, that one that is shown. And you will see what looks like some tanks, and this is in proximity or relatively close to storage tanks of the JPSCo Power Plant site, which is already under construction.

DR. DOUGLAS: Now, the potential impacts and risks are as follows: You will have invariably some siltation during the laying of the pipe or pipeline. The technology that will be used is state-of-the-art, best available technology for trenching, using water jets to excavate and cover the pipes. And this will reduce the generation of siltation plume or sediments as you may know them, which should go through the bay; reduce it. I am not saying totally eliminate it because there is a lot of sediments out there, because a lot of rivers and

streams flow into that bay and there are a lot of run off that goes into it.

The area, as we say, is a high silt area, so that the plants and animals that are present there, they have adapted to short periods of elevated turbidity. In other words, ladies and gentlemen, without doing anything in the bay and you would have observed it, those of you who interacted with it on a more frequent basis, as a ship goes through the channel and the propeller is in motion, even that alone will cause the silt to be stirred up.

DR. DOUGLAS: Now, (B) the risk of adverse impact to coral reef: This will be reduced, as explained earlier, with the amendment or change that has been proposed. The depth of the coral reef, that is the substrate or the very bottom of it is uncertain or unknown, and this increases the likelihood or the probability of

damage to the structure if you use horizontal, directional drilling to go under the reef, which must be informed by drilling the very reef itself, because this equipment will impact on the reef and could shatter some of the structures.

DR. DOUGLAS: (C) The Floating Storage and Re-gasification Terminal, the FSRT: This reduces the impact of storms on the facility as the critical equipment for storage and delivery of liquified natural gas can be removed from the area when unfavourable adverse weather such as storms and hurricanes are approaching the island. Some of you here are familiar with some of the practices in industry. For example, the Bauxite Alumina Industry, in which whenever there is a hurricane approaching and there is a likelihood that it will make

land fall or hit Jamaica, ODPEM will explain it, you have a 72 hour shut down procedure in which everybody in the plant is notified, this looks like it's going to hit us, let's begin to close this plant down in an orderly manner until after the hurricane has passed or the threat is no longer -- something that exist -- the threat has been lifted or the warning has been lifted, just as in the case of the tsunami.

DR. DOUGLAS: Now, monitoring and evaluation of the project for all of its components: Those that have been mentioned must be done throughout the entire process. And this is from pre-construction or the preparation stage, the construction stage and the operations. That is when you have installed every single thing, you have so called commissioned or you have started up the plant and it is up and running, and all you have to do is to maintain it properly and see that it

runs smoothly and meet the purpose or objectives for which it was designed. This is for both the activities in the sea and on the land. And a detailed Monitoring Plan has been developed as a condition of the permit that is has been issued by NEPA.

So in concluding -- and you say boy you are so glad -- the project has major benefits to the environment in terms of environmental health, in terms of human health. The impact on the environment are significantly less. Human health will be fostered. The quality of the air that we will breathe will be much, much better. There is no guessing or speculation about this. Extensive and exhaustive atmospheric emission modelings have been done to prove this and to support this, and the information had to be submitted to the National Environment and Planning Agency.

DR. DOUGLAS: The amendments, there is also in addition to one and two, significant climate change benefits. As you know, climate change is one of the greatest current threats to the entire planet. It is indeed an existential threat to even the human race itself and so New Fortress Energy is making a significant contribution by converting a lot of our heavy fuel oil industries, up to and over maybe 45, 50 percent of the total energy to a much cleaner, better, friendlier fuel and gas, with all of these benefits.

DR. DOUGLAS: The amendments being proposed for the permits and licences, which are presently in force, further reduce the environmental impacts and reduce the risk to the resources of the marine environment during construction and during the operation after the construction has been completed.



In general the development and design of the project has been guided by the principles of Green Engineering. In broad and large measure it says if you can use less material, if you can use less equipment, if you can do it more efficiently, if you can do it in a shorter period, do it. If you can impact on the environment less, do it. That is the fundamental principle, and there are thousands of details to it which attend to different parts when you are designing something, the electrical, mechanical, civil, structural, all of these things are a part of what must be taken into Green Engineering, including what happens to all of these structures after the project has gone through its useful life, and you have closure plan and you salvage or dispose of those components.

DR. DOUGLAS: So overall, the project is an excellent example of sustainable development

already established, known and permitted, since it brings major macro-economic and micro economic benefits in terms of job creation, while at the same time bringing improve environmental health, human health and climate change benefits. And this will be achieved through contributing to major decreases in the emission of green house gases such as carbon dioxide, carbon monoxide, sulphur oxide, nitrogen oxide and so on. And, in addition, reduction of of emission of particulate to the atmosphere. Thank you very much, ladies and gentlemen.

(A P P L A U S E).

DR. DOUGLAS: In answering questions we have a great resource panel here. I will not be the only one necessarily answering questions. You will direct them through the Chairman and he will tell you what he would like you to do in asking questions.

CHAIRMAN:

If I was at church I perhaps would be calling for the benediction. But I am very mindful of the fact that I am not at church tonight, and so it is not quite the time for the benediction. I want to say, before I go any further, a special thanks to Dr. Conrad Douglas for such detailed presentation; one that really had a lot of graphics. We could really follow what is happening. In school, Dr. Douglas, they say you have different kinds of learners. You have the auditory learners, those who learn by hearing. You have the visual learners, for example, those who learn by seeing, and the other kinds of learners. And I would say if you were in the education field that you have really met all the different kind of needs as it relates to the learners. Quite frankly I don't know which one I am. But all I know is that I learn something and I understood what took

place awhile ago, and I am certain that many others here share the same sentiment. So I thank you for the clarity that you used in delivering your presentation awhile ago.

CHAIRMAN: But, nonetheless, it is very important that our stakeholders are very clear, crystal clear, not mud clear, in their own minds as to the impact, as to the benefit, as to the amendments of this project. And so I know persons would understand that it's not a new project, it is a project that was already approved, and all that is happening here tonight is that the Company is making a presentation as to changes that they see fit, that would benefit the project and benefit the environment. That is what I am getting from it, that it's a benefit to the environment, it is a benefit to the residents. So it brings a social benefit, it brings an environmental benefit, it brings an

economic benefit, that's what I am getting from this project. But guess what? The residents are here to get clarification, and so at this time should there be any misunderstanding, should there be anything that our residents want to understand a little better, God is good to us that we have the technical team here, a plethora of persons who are competent, capable and ready to answer any questions relating to the proposed amendments.

So, ladies and gentlemen, at this time we would want to open the floor in a very organized fashion, in a very organized way, where you can ask any question relating to the project. And I emphasize the fact that it must relate to the amendment of the project, so I don't expect that you are going to ask about Jamaica Broilers plant or when is the next plant going to be built, that kind of thing, or about the old Harbour Primary School. I

am just saying. So we want the questions to be pointed. We want the questions to benefit everybody and the answers. We have a portable microphone that is available, because I don't want only yourself and the presenter to benefit from the question, we want everybody to benefit, because this is a meeting to give information to the public, and that is what we are here for, and that is my purpose, to facilitate just that, a very transparent process. And so for those persons who want to ask a question, there are certain things that I am asking, that you first say your name and which organization or community that you are associated with. So if you are representing an organization you would say the organization, or if you are representing your community you would say the community and you tell us the capacity that you are here as, you make your question or you pose your questions

to me and or through me. Let me get that right, not to me, you know, through me, and I will pass it on to the relevant persons to give answers to your questions. Resident, I know you have been waiting for a very long while, but this is now your opportunity and the floor is now open, so you do by show of hands at this time. So I am recognizing the gentleman around the back in the white and blue stripe. You begin with your name and who you are affiliated with or representing.

MR. MOODIE: Ladies and gentlemen, good evening, my name is Charles Moodie, I am a fisherman.

CHAIRMAN: Charles Moodie.

MR. MOODIE: From Old Harbour Bay. I heard in your presentation about the platform that we are putting. My first question is, how much of our fishing area are you

taking away from us? I heard about removal of the platform and the extension of the pipeline. Would you mind telling me why, because the original power station before, there was a pipeline that runs from Port Esquivel to the power station and that did not take up a lot of our fishing ground. What you are doing right now is taking away from us extensive amount of fishing ground.

MR. MOODIE: Would you tell me where are you expecting us to travel, how far from your platform can we travel at a distance, and how much of the fishing ground are you taking away from us.

CHAIRMAN: Thank you for that question. We now ask Dr. Douglas to answer that question.

DR. DOUGLAS: Thank you very much, Mr. Chairman. Mr. Moodie, Charles, thank you for that question. It is very important, because



we have been discussing sustainable development, and a lot of you present here this evening and, in fact, Jamaica is dependent on the resources that is in that area. That's what you are saying, that's your livelihood. And so we have had to take this into account as the project is developed. So let me just start by saying, you remember what was projected, to say that the original, which has been permitted and licenced had a footprint of some 3,000 plus meters. What is being requested now is a reduced footprint of just over 1,000 meters for the moment. This is the bigger one up at the top. (Indicating on slide)

DR. DOUGLAS: And this is being reduced to the smaller one. The exact original permitted footprint was 3,121 square meters and the new one being proposed is 1,290 square meters or a reduction of over 2,000 square meters. That's one aspect of it, one aspect which is very

important.

Now, the second aspect of it is that there are regulations that are governing the entire Natural Gas Industry in Jamaica and guidelines throughout the world. And your question about distance and size is important. What the NEPA guidelines developed by the World Bank and by the Ministry of Energy formally, and by NEPA itself, used to say it's 500 meters. That's big. Because you know that you go around stadium track one time and then you run 100 meters, that's 500 meters. Usain can tell you about it. You see it all the while, to make it clear. What you had previously negotiated and agreed from the original was to reduce it to 300 meters. That's significantly less. That means you don't go around the entire stadium track, you only break Usain's 300-meter record. Not yet finish. So in doing this we had to also consult with the

Fisheries Division for safety and security reasons for everybody concerned, including the ship. There is a distance of approach in the Regulations. And, you know, it takes into account practical things. How far away you can really stay and throw a stick of dynamite, for example. Believe me, even that is taken into account. So those things are there, the resources are there. We know, and in the studies there are fish sanctuaries in the areas. We know that although there is extensive nutrients in the area, that has caused significant reduction in the quality of reef through eutrophication. That is a situation that you are dependent on. I go to Old Harbour Bay and buy fish and lobster and that's why you are here. So that will be taken into the account.

DR. DOUGLAS: But, in summary, in answering your question, it is noted, it is in the

record, and it will be taken into account as we proceed to the amendment. So thank you very much Mr. Moodie for your question.

MR. MOODIE: Further, is there anyone here that have the experience of good size of the fish sanctuary both on left and right; from the power station which is the original one? We have official distance.

DR. DOUGLAS: Which was bigger, 300 meters.

MR. MOODIE: I am speaking time past. There are certain distance that you have to fish from the power station. That power station let out the water that spills from the turbine, it is heat, hot water. That destroy reefs on that section. West from there you have the Ethanol Plant, west from there you have Port Esquivel. Advance to Port Esquivel is the fishing sanctuary. The area that

you are putting the platform now is the only area we have our channel and for our fishing purpose. Because on the eastern side there is fishing sanctuary. The simple question I am asking, from any one side here, tell me how much of the fishing area are you taking away from us?

DR. DOUGLAS: Mr. Moodie, I have said that it is even less than before. Basically, one, your comment is taken into account. Secondly, the entire facility is being moved 1.5 Kilometer further away from Old Harbour Bay, further away. So what you were describing, and I take it into account, it is in the record, these are permitted facilities as this one is already permitted.

MR. MOODIE: Oh, so this gone through then?

DR. DOUGLAS: Not what we talking about this evening, but what we came here with.

MR. MOODIE: It's a foregone conclusion?

DR. DOUGLAS: No, sir, not what we are discussing this evening. And NEPA Mrs. Ruth-Ann Lacy Sherrard, said that absolutely clearly in her presentation, that it is a request for amendment. So I ask you to understand and appreciate, and your point is being recorded. It is not, for the record, a foregone conclusion, and we are here to get your views and record them and put them in the minutes. And this is being done and it will be taken into account. Okay, thank you Mr. Moodie.

CHAIRMAN: And thank you very much, Mr. Moodie, for your questions, I appreciate them, sir.

DR. DOUGLAS: I want to continue to come and buy my fish from you.

CHAIRMAN: Thank you. Of course we will be open to more questions. I am recognizing the gentleman that is two persons away, the gentleman in the hat from Mr. Moodie. He was indicating that he wanted to ask a question. But I just want to add my own clarity so we understand as we go forward. Sometimes you may hear some things a little more technical, I am a teacher so I have to try and make it simplified.

Again I want to say that we are having a discussion this afternoon about an amendment to something that was already approved. So an amendment is a change of plan, so change of aspect of the plans that were already approved. So this time I want to welcome the gentleman in the hat to pose his question for clarity.

MR. CAMPBELL: I live in this community, born, grown --

CHAIRMAN: I am not sure they are hearing you.

MR. CAMPBELL: I am Compton Campbell. That's my name everybody know me as, but otherwise I am Dennis Campbell.

CHAIRMAN: You change your name to Dennis.

MR. CAMPBELL: That's my official name but everybody know me as Compton.

CHAIRMAN: Give us the official one.

MR. CAMPBELL: Dennis Campbell.

CHAIRMAN: And you representing an organization, sir?

MR. CAMPBELL: I am a fisherman at Old Harbour Bay.

CHAIRMAN: Wonderful. So Mr. Compton Campbell, fisherman -- Mr. Dennis Campbell, fisherman, and he will be making his point now.

MR. CAMPBELL: Mr. Douglas suppose to know me quite



well from C-CAM. And if you remember me you remember Eulalee Thompson also. My problem with your presentation, whatever you call it, when you use the -- you said you would be blowing the [inaudible] When you do that, the sediment from it, where does that go? I say it end up on the reef. Again you say you closing in some more, even shorter distance. With these ships, these super tankers coming, you telling me because it's nearer in it's not more dredging? You may use less pipeline but to me you use more dredging to get the super tanker in. . Again the fishing in the area, fish love warmer water, and with a plant like that out there, a platform, it suppose to have some very cold water around it. It have to have cold water as to keep the temperature. So I would like you to tell me, being one who familiar quite well with all this fish sanctuary, because I am a part of who help make them. The reef you se,

yuh going knock certain part of it.  
Going west you going to knock more  
reefs.

DR. DOUGLAS: Can you repeat that part?

MR. CAMPBELL: I say when you doing what you doing,  
the barge and everything, you must lick  
more reefs going west, because I know  
the area like how I know inside here,  
so you must lick the reef. And when you  
go out to sea to bring that ship in you  
have to dredge the whole area to bring  
a ton basin. If you don't dredge the  
area you can't get the ship turn. Ship  
can't turn straight it have to have a  
basin.

MR. CAMPBELL: I have a lot more questions but I  
going allow it. I want to know what  
your scientific study with the silt, if  
you have done a split cylinder test to  
tell me exactly what is there, that you  
know what you going to dredge, what you

going to clean up. Have you ever done the split cylinder test to tell what's under the water? You say you going how many feet below. If you do the test I would be appreciative if you tell me what do you find there. God bless for the moment.

CHAIRMAN: Thank you very much, sir, over to Dr. Douglas.

DR. DOUGLAS: Thank you very much for your questions Mr. Campbell. I know how intimately you are involved with the entire Portland Bight area for these many decades, and you are associated with C-CAM for the longest while.

MR. CAMPBELL: The first member of C-CAM.

DR. DOUGLAS: And you will recall that we were the ones who did the study for the entire Portland Bight area, the first one. And it was under our situation that it was

recommended for declaration. And you will also remember that it has multiple use National Park status. You remember that, right? So that all of those facilities existing there are already permitted and up and operational. Yes, they do make their contributions right, in a number of ways to the areas and to the economy, and those are consistently being monitored and evaluated by NEPA and others.

But to come back, this is a project that has already been permitted, and it has already been issued. So they could have proceeded, Mr. Campbell, without any further reference to any stakeholder, except to the regulators and to yourselves if there is a problem. But as I said -- wait nuh, give me a chance. And we always give each other a chance to speak and to explain. That's the purpose of the meeting. All of your comments have been recorded and all of

them must be taken into account. You and I know that even the wetlands in the entire Portland Bight are precious, that these are major resources. It is the largest continuous stand of mangrove still existing in Jamaica. Isn't that so? And this is why they are proceeding with such caution in everything, and such diligence and such professionalism, it's not just a willy-nilly 'brif-braf', fly-by-night project. That's what I am saying. We have carried out the appropriate due diligence, investigations, to make certain that it was properly done, and you know it yuh nuh. You know that the deepest level of siltation and sediment over in the Bight is around that area, you can't stand up in there, it will cover you. You cover up to your neck and it feels like quick sand in some places. You know that. So we have to take those things into account. So the technology that we are going to use to

trench the area means that when the trenching is done, and we can show you some of that if you have the time, I know it takes time. The plume, instead of being dispersed into the big part of the sea and around the sea, is being thrown back on the bed. You must get an increase in turbidity. The quality of the sediment and what is there has been assessed. That area, as you know, we are still managing and trying to protect. The water quality around there is very bad. It is full of nitrate and it is full of phosphate, meaning you have eutrophication from the farm run off, the aquaculture, the poultry, the sugar. And this is why you have algal bloom so much that has literally smothered the reef. That don't say you going to destroy it. You going to do everything to make sure you protect it. The oxygen level around there in the water is very low, so that some specie of animals cannot even survive. We call

it hypoxic and anoxic. Meaning it's below the required oxygen level or the oxygen is not there at all. So you have mainly certain types of activities which are known as anaerobic activity. For example, when that is happening it cause certain gases to be emitted. It not going to disturb that, we not going to make it worse. The entire activity of trenching will not go more the pipe laying five to six days, and it will be monitored intensively. As a matter of fact, people like you who know the area, and this is why we consult and have discussions with C-CAM up to yesterday and before, with Mrs. Parchment, with Brandon Hay, the Technical Officer, all of them. So we are not taking this thing lightly. NFE is not taking anything lightly, they are serious, they are committed. They have to comply with regulations. They have stakeholders, not just we, otherwise throughout the world, and shareholders to account to.

And we have NEPA and we have the regulators. So, please, you know Mr. Campbell, super tanker, there is not going to be no dredging to accommodate no super tanker, post-Panama vessel type of thing. They also have a dredging licence, for which they were allowed to dredge some 557 cubic meters of material. So let's work together, and let's get the best product for this project so we can be all happy and proud. Nuh suh.

(A P P L A U S E).

MR. ROBINSON: Mi want a talk. Mi nuh want forget what mi a talk.

CHAIRMAN: Write it.

MR. ROBINSON: Beg yuh a talk.

CHAIRMAN: I want to go in the same order that I identified the person.



MR. ROBINSON: A whole heap a fisherman talk, so mek civilian talk.

CHAIRMAN: I don't know who is a fisherman. I can't look on somebody and say if they are a fisherman. So I beg yuh, don't lose your point hold it.

MR. ROBINSON: All right sah.

CHAIRMAN: Sir, I beg yuh, don't lose your point, don't lose it hold it. If you not remembering tell the lady beside you, she look like she can remember well.

MR. HENDERSON: Good evening each and everyone. My name is Ralph Henderson of the Old Harbour Fishing Village. I am a fisherman. What I want ask, where you guys building your project is the back yard of where I earn my livelihood everyday. Will fishermen be able to benefit from this or get job?

CHAIRMAN:                    That's the question, sir? Over to you, sir.

DR. DOUGLAS:                Very quick answer Mr. Henderson, Ralph, I know it's a burning issue for you and we discussed it last Sunday when we were out there, and the rest of the crew. The point is being made that when anything is being done in the area and you have meetings like this you are being told that you going to get gainful employment from the project, and in the long run you don't see people from your community being employed. I can assure you New Fortress is developing a policy and a programme, not just for recruitment, I am not making commitment, but for development and people development through education and so on. We are not at that point yet with this thing, this change that is being requested. But you said it to me, it was noted, and to Doran, we were there

with you on Sunday. It is noted in our notes from that meeting as a part of the profile, and it is noted tonight.

DR. DOUGLAS: We are talking about policies to support economic growth, in which the country has been quagmired for a long time, too long. And we are talking about policies that will support job creation. So you are going to have in addition to your job as a fisherman from which you have your livelihood, your children and your children's children, will have better opportunities as a result of this project. This is where sustainable development is. And they are committed to training and educating and working with the communities and schools, to see that children can take their place to operate this situation. And it will not only be for this specific construction and the operations after, and for JPSCo and so on. But because it will result in reduced cost in energy to the country,

everybody throughout the nation will be better off. And a lot of the things that we had to give up, and several of the industries that we had years gone by that had to run and shut down because the energy cost was too high, it means that these can be facilitated, cottage industries, value added agriculture, agro procession, light industries, manufacturing, metallurgy, pyrometallurgy, and a whole host of things that we have forgotten that we used to enjoy, which run and gone to Trinidad, a lot of them, and we have to be re-importing the things and from other places. So we have a balance of trade with some of them of over US\$500 million a year now, people we used to export to. And the jobs that we used to create, they are no longer being created. That's part of what this is about. And we recognize that in this country we have some 400,000 unattached youths. And this is part of why you

have this problem. So we taking that into account. Your concern is noted, and this project will facilitate helping us to get out of that quagmire in which we have found ourselves for many years. So thanks Mr. Henderson for your comment.

(A P P L A U S E).

CHAIRMAN: Thank you very much, sir, for the question and thank you, sir, for the answer. Over to you, sir.

MR. ROBINSON: Good night everybody, Salt River Citizens Association.

CHAIRMAN: What's your name?

MR.ROBINSON: Oral. They call me Fatta, Salt River Citizens Association.

CHAIRMAN: We need your full name, sir.

MR. ROBINSON: Oral Robinson, Salt River Citizen,  
PRO. This is just not for the fisherman

alone. Mi nah really ask nuh question, mi a se something. This is not for the fisherman alone. I went to Bogue in Montego Bay where I first see this plant. When I recognize this plant I went to Bogue in Montego Bay, and I see the fish dem just a float, suh, float suh, float suh. This nah kill nuh fish, this a expand fish. This nah tek nuh land, this a expand work fi poor youth and poor people. Fisherman can guh a sea and ketch fish, mi nuh know 'bout sea.

MR. ROBINSON: So listen to me now, this project is a project what need to go on to facilitate the suffering youths and people dem round de place, because dis place is a suffering place. Mi si Old Harbour Bay Plant up deh suh, mi nuh si it a give nuh problem, mi nuh si di fisherman dem a mek nuh trouble. Rocky Point port over deh suh, mi nuh si no fisherman a mek no trouble.

This project is a project that suppose to go on. Mi nuh si nuh fish a dead. Mi guh down a Bogue, dem invite mi down there, Mr. Douglas and these people, and I go down there the water pretty and clean and fish a float, fish just a breed up suh. So how dis fi kill fish? Dis nah kill no fish. This nah tek nuh land so oonu have to stop plant out deh so and stop this and stop that. Oonu need fi mek this go on and stop hold down the thing. That's why we a suffer suh. Oonu need to let it go on.

MR. ROBINSON: A one bag a hungry youth deh bout. Yuh nuh si how much foolishness a gwaan bout the place. Man a shoot dem best friend through hungry and sufferation. Si de police dem, ask dem. Suh oonu a guh stop work? Fisherman have boat and can guh a sea guh ketch fish. Mi nuh know bout no fishing. We know bout dis fi gwaan and can help wi, suh fisherman can eat food, everybody can eat food.

Because when we work it out, boat a guh work, ship a guh work, watchman a guh work, boss a guh work. Mek di people do dem thing man, a dat wi se right now. Respect, yuh hear.

(A P P L A U S E)

MR. ROBINSON: I want se something, hold on, sorry. Miss NEPA and Mr. NEPA, oonu need fi look through the place and si se oonu a stop nuff thing mek wi suffa, Open up oonu eye. Yuh si how oonu pretty and shine. A suh we want look tuh, like oonu. Yuh undastand wha mi a se. Open up oonu eye and stop hold down everything, buss the thing and mek wi survive.

MR. ROBINSON: Because look here, Clarendon, Old Harbour Bay, a pure killing and bad mind. Listen good; oonu nuh listen news and si what a gwaan, pure bad mind. If we have no work, wi a guy waan tek yuh things when wi si yuh. Yuh understand? Seriously, wi waan pretty like oonu tuh,



and shine and survive and drive pretty car and have big house. A wuk we haffi wuk fah. We don't know nothing bout teking people things. Suh yuh si dis yah system right now how it a come -- a hundred million years mi neva hear dis. We want wuk and collect tuh, and mek wi pickney guh school. A dat mi se. So Miss NEPA, tell the bigger heads dem up there, put it pon record, se fi bus de thing and stop hold wi down. Respect.

(A P P L A U S E).

DR. DOUGLAS: Thank you Mr. Robinson, Oral Robinson, otherwise known as Fatta, for your comments. I can't say anymore. The elocution excellent, advocacy was perfect, and it is being recorded. And I glad you mentioned that you have firsthand experience to see the installation in Bogue, in Montego Bay, and your description of the number of fishes. Thank you very much, it is recorded, and the representatives are

here, and they know we dealing about sustainability and balance. That is why the amendments and changes are being requested. I can't guild the lily. They say it's stupid to try to do so. I see you make a perfect statement than the one you did, I can't try to add to that. Thank you Mr. Robinson for your comment.

(A P P L A U S E).

CHAIRMAN: Thank you very much, sir.

MR. ROBINSON: Respect principal, yuh hear sah.

CHAIRMAN: That was most verbose. A good thing, it mean good things.

MR. ROBINSON: Principal, mi understand yuh man.

CHAIRMAN: This is the meeting where all views can contend, and everyone is welcome to make whatever point they have to make. So at this time we are still open for

any further questions suggestions,  
recommendations, comments.

PARTICIPANT:           Mek the work flow, that a the only  
thing.

DR. DOUGLAS:           Can we ask you to take the microphone  
and make your comments properly.

CHAIRMAN:             The only thing is that whatever we  
do, we do it respectfully. There is  
nothing wrong in making your comments  
one way or the other but as long as we  
show respect to one another. So, sir,  
your name and where you are from.

MR. D. ROBINSON:      Good night. David Robinson from  
Salt River Community. We want work, we  
don't want nobody stop the work, we want  
the work flow, because we can eat food,  
because we know the pipe can't kill the  
fish under the sea. We understand if  
you lay it good nothing can go wrong.

It in the water for how many years and the thing show

pipe a run and it nah kill off any fish. We know it nah kill off anything, mek the work flow so everybody can eat some food, no fish nah guh dead, we just want the work flow and we enjoy wi self and work as one Thank you.

CHAIRMAN:

I think what we are trying to achieve here is that at the end of the day is you will be fine, we all shall be fine and the fishermen shall be fine. So we want to ensure that the fishermen are clear within their minds that they are fine. So I don't want at no point, and I am not saying that we give any wrong impression at no point to say that I am more important than you are, my industry is more important than you. What I am getting from you, and I must commend all of you, is that we are saying every man lawful, and everything there, everybody's position and job is important, and that is what we must leave here with.

CHAIRMAN:                   And I am really enjoying the mood of the presentation, the active questions that are being asked, the clarifications that you are seeking, the endorsements that you have been given. This is the nature of the public forum. At this time if there is anybody else who wants to make a comment, have a question, the floor is still open as we are moving at this time.

MR. WILLIAMS:            Good evening everyone, my name is Michail Williams representing Salt River Citizen Association, Vice President.

CHAIRMAN:                   So we really pass the fishermen for real. So it's three persons now from Citizens Association.

DR. DOUGLAS:            What's your first name?

MR. WILLIAMS:            Michail, M-i-c-h-a-i-l Williams.

Mr. Beckford, could you move the slide to the concrete maps. Mr. Douglas, I don't know if this question is towards you, but I want to know how secure all those maps in regard to the pipeline? Meaning any impact or any shifting of the earth, if you have an accident, leak, what security measures have to be taken with flora and fauna if there is a leak.

DR. DOUGLAS:           Excellent point, thank you. And it is noted. This is carefully designed for the purpose of protection. And the protection is that what exist if you are going to lay another pipe over it, you want to make certain you not creating or causing a damage. So let's understand that. It is made out of rubberized material and concrete fixtures, which means that it is heavy, it is anchored, it can be fixed and at the same time it enjoys a certain level of flexibility. So this is taken into account and it is part of the whole

process of risk analysis and risk assessment. Your point is well taken. There are much more details that we can offer if you so desire. And there is a period for that. But this is taken into account and we have some of our engineers here, Mr. Brannen McElmurray himself is an engineer; multi-faceted, multi-dimensional plan; also a businessman and a legal man who will be able to elaborate if you wish. But I think that the amendments or changes, you will agree, are better than what previously exist, and nothing is being done that will put anything that exist, including the present permits and licences, and the future operations at any risk. In fact, it reduces the risk and reduces the impact. Thank you very much, Mr. Williams, your point is noted.

CHAIRMAN: I am getting the idea that we are getting so much clarity that the questions are getting fewer and fewer.

But at this time I still ask if there is anyone who have any other thing that they want to add, any other question before we wrap up? I know that the information is really clear tonight.

CHAIRMAN: Because if I tell you something, I came here as a blank slate myself, but I am leaving really filled. Trust me, I am no environmentalist, I am no civil engineer or any kind of engineer at all, but when I leave here tonight I feel like I can go to UTECH and teach now.

[Laughs]

Is there any other question?

DR. DOUGLAS: Thank you, Chairman. If I may be permitted one final comment, Chairman. I would just like to express on behalf of New Fortress Energy, all the agencies here represented, our thanks to you for hosting us and for the professional way in which you have chaired this meeting this evening. I must say when we spoke and I saw you



for the first time, I didn't expect to see such a young man as principal. And I must also say, as I said earlier, I know your name is Mr. George Goode, and I said so at the beginning, and I said you are very, very good indeed, and if it is permitted and you would agree, I would change your name to Mr. George Excellent. Thank you very much, sir.

CHAIRMAN:

Thank you very much, sir, thank you, thank you, thank you. I am getting the impression, ladies and gentlemen, but I just don't want to leave without saying -- I want to ensure that everybody who wanted an opportunity got their opportunity. I know it is time that you are really eager to leave because you want to get home now, but just in case there was another burning issue before, even though we are basically wrapping up now -- that is telling me really that everything went well. There seem to be no further

questions. There is much clarity in what was said here.

CHAIRMAN: And personally as Chairman I want to express my own thanks to a wonderful audience this afternoon. You have been an excellent audience. I won't use the word 'excellent' for myself, but I pass it on to the audience, you have been excellent; the way you have conducted yourselves, the way you have probed with your questions. I heard some really master questions I would say, tonight. These fishermen and others, residents, who have asked questions tonight, the questions you asked tells me you know your craft well, you understand environmental issues well, and you asked the right questions, and indeed the answers were excellent as well, marvelous answers, wonderful. Sir, that's a lot of clarity, and might I say when I grow up I want to be just like you, wonderful.

CHAIRMAN: Ladies and gentlemen, as I said my heart is filled with nothing but gratitude to you for turning out tonight, this afternoon, this evening, to come and hear concerns relating to your community, relating to development in your community, your country, your parish. It is good that you have taken the time out to come and understand for yourself, so when you go back to your community nobody can't tell you what happen, nobody can't give you any second hand information because you have the right information, you have the first hand information, and that is always good. So I want to commend you as active citizens. We have to stand up as citizens and be active, not passive, be in the know, and you have taken that approach, and I commend you tremendously for that. Give yourselves a big round of applause for that.

(A P P L A U S E)

CHAIRMAN: I want to thank as well, New Fortress Energy and their representatives, CEO, and other dignitaries from New Fortress Energy, for your presence here. You have really made a difference, and we thank you for coming. We want to thank Conrad Douglas & Associates Limited, its Managing Director and, of course, members of staff; other agencies represented, NEPA, of course NSWMA, the Jamaica Fire Department, the Jamaica Constabulary Force is represented, the Jamaica National Heritage Trust is represented as well, and a number of other agencies to include the Jamaica Public Service Company also represented. We want to thank the citizens, we want to thank everyone for coming out. Thank you again for coming to this meeting. Thank you for coming to Old Harbour Primary School. We wish you well, we wish this project well, we wish your community well, because at the

end of the day it is human development,  
it is development for our communities  
while protecting our environment,  
because we want it to be safe not just  
for our children, but our children's  
children, and grandchildren and  
everybody, great grand and great, great,  
and great great and we don't stop great  
until we greater and greater. Thank you  
very much, ladies and gentlemen, have a  
wonderful evening.

(Adjournment taken at 7:55 p.m.)

## Appendix 1: NEPA Approved Agenda

---

# AGENDA

---

## NFE South Holdings Limited



### Public Meeting for the Presentation of The Request for Amendments to Environment Permits and Beach Licences Issued for the Proposed Natural Gas Storage and Distribution System at Old Harbour Bay, St. Catherine.

---

Chairman: Mr. George Goode, Principal, Old Harbour Primary School

1. Call to Order - Chairman
2. Prayers
3. Welcome & Introductions – Chairman
4. Statement by the National Environment & Planning Agency (NEPA)
5. Presentation
  - Environment Permit and Beach Licence Amendment Request for the Proposed Natural Gas Storage and Distribution System at Old Harbour Bay, St Catherine
6. Questions & Answers
7. Vote of Thanks
8. Adjournment

Dr. Conrad Douglas  
Executive Chairman & Principal  
Consultant  
Conrad Douglas & Associates Limited



ENVIRONMENTAL MANAGEMENT CONSULTANTS

CONRAD DOUGLAS & ASSOCIATES LIMITED

Telephone: (876) 929-0025/0023/8824/8823

Email: [cdaestech@hotmail.com](mailto:cdaestech@hotmail.com) | [conraddouglasnassociatesltd@gmail.com](mailto:conraddouglasnassociatesltd@gmail.com)



## Appendix 2: Advertisements

**Table 1: NFE South Holding Ltd Advertising Dates**

The Gleaner	Jamaica Observer Limited
January 3, 2018	January 3, 2018
January 8, 2018	January 5, 2018

THE GLEANER, WEDNESDAY, JANUARY 3, 2018 • www.jamaica-gleaner.com • f gleanerjamaica • t jamaicagleaner • NEWS C7

**NWA NATIONAL WORKS AGENCY**

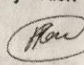
**NOTICE OF ROAD CLOSURE**

The National Works Agency, along with Sinopharm Pan-Caribbean Limited, hereby notifies the public that Hanover Street between Port Royal Street and Harbour Street and one lane Port Royal Street will be closed to vehicular traffic on **Thursday, January 4, 2018 from 8:00 p.m. to 12:00 a.m.**

This is to facilitate pouring of concrete for foundation slab for development at 21 Harbour Street (Grace Kennedy Remittance Services).

The public is advised to proceed with caution and observe the instructions of the Police, flag persons and posted warning signs.

By Order:



Patrick Rose  
for Chief Executive Officer  
National Works Agency

"Developing Safe, Reliable & Quality Roads" www.nwa.gov.jm

**NFE SOUTH HOLDINGS LIMITED**  
INVITES YOU TO A

**PUBLIC MEETING**

ON THE  
**AMENDMENT TO ENVIRONMENTAL PERMITS AND BEACH LICENSES ISSUED**  
FOR  
**THE PROPOSED ESTABLISHMENT OF A LNG TERMINAL AND PIPELINE PROJECT, OLD HARBOUR, ST. CATHERINE**


**VENUE:** OLD HARBOUR PRIMARY SCHOOL, MARLIE ACRES, OLD HARBOUR, IN THE PARISH OF ST. CATHERINE

**DATE:** WEDNESDAY, JANUARY 10, 2018  
**TIME:** 5:30 P.M.

Information providing the Proposed Amendments are available for reviewing at:

- Old Harbour Bay Library
- www.nepa.gov.jm
- www.cdaestech.com

**NFE SOUTH HOLDINGS LIMITED**

 New Fortress  
ENERGY

For inquiries, please call 929-0023/0025/8824 or email us at:  
cdaestech@hotmail.com or conraddouglasnassociatesltd@gmail.com

## Tech workers heading to Canada

Dear Mr Brown,  
I work in the information technology industry. I have heard about the growing information technology industry in Canada and am wondering if I can obtain a job there.  
— JC

Dear JC:

The normal trend regarding the brightest minds in technology leaving for Silicon Valley has changed in recent times, according to a recent survey which revealed that many job applicants have been heading to Canada instead.

According to the survey, which was sent to 42 Canadian, high-growth technology firms, 62 per cent of respondents have noticed a significant increase in job applications from the United States.

For example, Ottawa-based e-commerce platform Shopify Inc reported receiving 40 per cent more applications from



The trend regarding the brightest minds in technology leaving for Silicon Valley has changed, according to a recent survey which revealed that many job applicants have been heading to Canada instead.

the US in the first quarter of 2017 than it did during an average quarter in 2016.

The Canadian technology industry has been marketing itself as a friendlier alternative for immigrants, in response to the policies of the Donald Trump Administration. Many immigrants feel unwelcome in

the US given Trump's public statements and policy stance.

In January 2017, 150 people from Canada's leading tech companies and accelerators published an open letter denouncing an executive order from Trump barring travellers from seven Muslim-majority countries from entering the

United States.

Trump has also pledged to restrict a special American visa programme known as H-1B that allows foreigners to work or run businesses in the US, and is heavily used by the tech industry.

In addition to the increase in applicants, observers have noticed:

- An increase in general investors;

- An increase in venture capitalist making trips to Canada;
- Technology workers looking for economic opportunity and social stability for their work environment, and to raise their families.

- A general sense of momentum in the Canadian technology industry, amidst the political concerns in the US.

### CANADA'S GLOBAL TALENT STREAM (GTS)

Canada makes it easier for Canadian companies to recruit and retain global talent. The programme is assessed based on merit, according to stipulated requirements.

The GTS, which forms part of the Government's Global Skills Strategy, has two categories regarding eligibility for

the GTS, namely:

- Category A, which covers high-growth companies with a demonstrated need for unique talent to scale up and grow; and

- Category B, which covers companies with a demonstrated need for highly skilled foreign nationals for occupations found on a skills shortage list.

The list contains several occupations in the technology industry.

Eligible employers will benefit from expedited processing times for certain Labour Market Impact Assessment (LMIA)-exempt work permits as well as a new LMIA programme, with quicker processing times in days instead of months. After the LMIA application is approved, the work permit application process should take 10 business days.

In response to your question, although it is possible to obtain a job offer, I am not sure of the probability of obtaining one, as there are many candidates already in Canada with open work permits who have studied in Canada.

Please visit [JAMAICA2CANADA.COM](http://JAMAICA2CANADA.COM) for additional information on Canadian Permanent Residence programmes, including Express Entry, the Study & Work programme, visas or appeals, etc.

Antonn Brown, BA, (Hons), LL.B, MSc, RCIC, is an immigration counsel and an accredited Canadian education agent of [JAMAICA2CANADA.COM](http://JAMAICA2CANADA.COM) — a Canadian immigration and education firm in Kingston. Send questions/comments to [jamaica2canada@gmail.com](mailto:jamaica2canada@gmail.com)

THE DAILY OBSERVER Wednesday, January 3, 2018  
www.jamaicaobserver.com  
twitter/jamaicaobserver

**NFE SOUTH HOLDINGS LIMITED**  
INVITES YOU TO A  
**PUBLIC MEETING**  
ON THE  
**AMENDMENT TO ENVIRONMENTAL PERMITS AND BEACH LICENSES ISSUED**  
FOR  
**THE PROPOSED ESTABLISHMENT OF A LNG TERMINAL AND PIPELINE PROJECT, OLD HARBOUR, ST. CATHERINE**

**VENUE: OLD HARBOUR PRIMARY SCHOOL, MARLIE ACRES, OLD HARBOUR, IN THE PARISH OF ST. CATHERINE**

**DATE: WEDNESDAY, JANUARY 10, 2018**  
**TIME: 5:30 P.M.**

Information providing the Proposed Amendments are available for reviewing at:  
• Old Harbour Bay Library  
• [www.npsa.gov.jm](http://www.npsa.gov.jm)  
• [www.cdaestech.com](http://www.cdaestech.com)

**NFE SOUTH HOLDINGS LIMITED**  
 **New Fortress ENERGY**

For inquiries, please call 929-0023/0025/8824 or email us at: [cdaestech@hotmail.com](mailto:cdaestech@hotmail.com) or [conraddouglassnasassociatesltd@gmail.com](mailto:conraddouglassnasassociatesltd@gmail.com)



local airbase have been deployed to help fight the flames.

Eleanor, the fourth winter storm to hit Europe since December, swept into the continent on Wednesday after battering Britain and Ireland.

It has left at least five people dead, including a 21-year-old skier hit by a falling tree in France and a couple in their 60s swept away on Spain's northern Basque coast by a huge wave.

On Thursday in the French Alps, firefighters said a woman in her 90s died of a heart attack in Crets-en-Belledonne after floods sent a torrent of mud and water into her home.

And, a farmer in Savoie was found dead under a snowslide.

Meanwhile, a French volunteer firefighter was reported missing after rushing to help when a car plunged into an overflowing river in the Alpine village of Le Moutaret.

At Lenk in central Switzerland, eight

people were hurt when a violent gust of wind overturned a railway carriage.

In the Netherlands, Eleanor has dealt about 10 million euros (US\$12 million) of damage to buildings and cars, the Dutch insurers' union estimated, cited by public television.

The whole of Spain's northern coast remained on "orange" alert — the second highest on a four-point scale — because of the risk from strong winds and large waves.

More than 40 towns in southwestern Spain have meanwhile brought forward their annual Epiphany feast parades — celebrating the coming of the three wise men with gifts for Jesus — to yesterday because of heavy rain forecast for Friday.

The worst of the storm appeared to have passed yesterday, though much of eastern France was still on "orange" alert for heavy winds, floods and avalanches.

"The intensity of the rain and melting

snow bring a risk of floods via overflowing streams and mudslides," warned forecaster Cecile Coleou.

About 29,000 French homes remained without power, a third of them in Corsica.

Germany lowered its alert for violent winds Wednesday evening, but high tides were worrying several states, including in the Moselle Valley where heavy downpours have halted boat traffic.

The Rhine river was set to surge to seven metres (23 feet) yesterday and was still rising, the Bild newspaper reported. River traffic will be suspended if it hits 8.3 metres.

The storm had snarled air traffic on Wednesday, briefly shutting the Strasbourg and Basel-Mulhouse airports and delaying departures from Paris, Frankfurt and Amsterdam.

It also played havoc with road and rail transport, leaving branches, electrical lines and other debris strewn across tracks and highways.

taper off until late Friday as the storm moves northeastward into Canada.

Weather forecasters dubbed the event a "bomb cyclone" — their nickname for a phenomenon known as "bombogenesis," in which a weather system experiences a sharp drop in atmospheric pressure and intensifies rapidly, unleashing hurricane-force winds.

Americans along the East Coast faced potential power outages in bitterly cold sub-freezing temperatures — so far, some 24,000 customers in Virginia, 9,000 in Massachusetts, and thousands more in Georgia, South Carolina and Florida are already affected.

The southeast was the first to feel the storm's icy lash — Florida saw its first snow in nearly three decades.

THE DAILY OBSERVER Friday, January 5, 2018 twitter/jamaicaobserver www.jamaicaobserver.com



**FOR ONLY \$100 Bruk out a Brukniss**

**41M**

**BUY YOUR LOTTO TICKETS NOW!**

**LOTTO**

Approved under the Betting Gaming & Lotteries Act. Tickets sold by Supreme Lottery. All revenues go towards sports. Participation is guaranteed.

**NFE SOUTH HOLDINGS LIMITED**

FURTHER TO ENVIRONMENTAL IMPACT ASSESSMENT TITLED, "NFE SOUTH HOLDINGS LIMITED LNG TERMINAL AND PIPELINE PROJECT, OLD HARBOUR, ST. CATHERINE," NFE SOUTH HOLDINGS LIMITED

INVITES YOU TO A **PUBLIC MEETING** ON THE

**AMENDMENT TO ENVIRONMENTAL PERMITS AND BEACH LICENSES ISSUED FOR**

**THE PROPOSED ESTABLISHMENT OF A LNG TERMINAL AND PIPELINE PROJECT, OLD HARBOUR, ST. CATHERINE**

**VENUE:** OLD HARBOUR PRIMARY SCHOOL, MARLIE ACRES, OLD HARBOUR, IN THE PARISH OF ST. CATHERINE

**DATE:** WEDNESDAY, JANUARY 10, 2018

**TIME:** 5:30 P.M.

Information providing the Proposed Amendments are available for review at:

- NEPA Document Centre
- Old Harbour Bay Fishing Village
- Old Harbour Branch Library
- [www.nepa.gov.jm](http://www.nepa.gov.jm)
- [www.cdaestech.com](http://www.cdaestech.com)

Comments and queries can be sent to NEPA at: [applications@nepa.gov.jm](mailto:applications@nepa.gov.jm)

**NFE SOUTH HOLDINGS LIMITED**

 **New Fortress**  
ENERGY

For inquiries, please call 929-0023-0025 or 824 or email us at: [cdaestech@hotmail.com](mailto:cdaestech@hotmail.com) or [conrad@douglasassociatesltd@gmail.com](mailto:conrad@douglasassociatesltd@gmail.com)

THE GLEANER, MONDAY, JANUARY 8, 2018 | www.jamaica-gleaner.com

## NFE SOUTH HOLDINGS LIMITED

HER TO ENVIRONMENTAL IMPACT ASSESSMENT TITLED, "NFE SOUTH  
NGS LIMITED LNG TERMINAL AND PIPELINE PROJECT, OLD HARBOUR,  
ST. CATHERINE," NFE SOUTH HOLDINGS LIMITED  
INVITES YOU TO A

## PUBLIC MEETING

ON THE  
AMENDMENT TO ENVIRONMENTAL PERMITS AND  
BEACH LICENSES ISSUED  
FOR  
PROPOSED ESTABLISHMENT OF A LNG TERMINAL AND PIPELINE  
PROJECT, OLD HARBOUR, ST. CATHERINE

VENUE: OLD HARBOUR PRIMARY SCHOOL, MARLIE ACRES,  
OLD HARBOUR, IN THE PARISH OF ST. CATHERINE

DATE: WEDNESDAY, JANUARY 10, 2018  
TIME: 5:30 P.M.

Information providing the Proposed Amendments are  
available for review at:

- NEPA Document Centre
- Old Harbour Bay Fishing Village c/o Sue Beckford
- Old Harbour Branch Library
- [www.nepa.gov.jm](http://www.nepa.gov.jm)
- [www.cdaestech.com](http://www.cdaestech.com)

ments and queries can be sent to NEPA at: [applications@nepa.gov.jm](mailto:applications@nepa.gov.jm)

## NFE SOUTH HOLDINGS LIMITED



For inquiries, please call 929-0023/0025/8824 or email us at:  
[laestech@hotmail.com](mailto:laestech@hotmail.com) or [conraddouglasassociatesltd@gmail.com](mailto:conraddouglasassociatesltd@gmail.com)

VICE PRESIDENT MING PRINCE HAVE  
tweeted their support for the pro-  
testers, but they have not called  
for violence or disruptive acts.

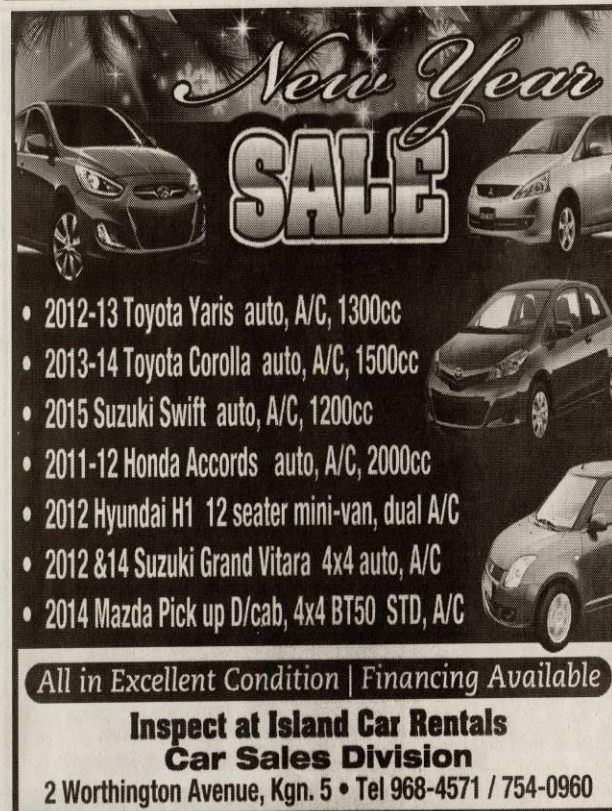
AP

final report on the search con-  
ceded that authorities were no  
closer to knowing the reasons  
for the Boeing 777's disappear-  
ance, or its exact location.

"The basis of the offer from

on Tuesday, was taking advan-  
tage of favourable weather to  
move towards "the vicinity of the  
possible search zone".

AP



**New Year SALE**

- 2012-13 Toyota Yaris auto, A/C, 1300cc
- 2013-14 Toyota Corolla auto, A/C, 1500cc
- 2015 Suzuki Swift auto, A/C, 1200cc
- 2011-12 Honda Accords auto, A/C, 2000cc
- 2012 Hyundai H1 12 seater mini-van, dual A/C
- 2012 & 14 Suzuki Grand Vitara 4x4 auto, A/C
- 2014 Mazda Pick up D/cab, 4x4 BT50 STD, A/C

All in Excellent Condition | Financing Available

**Inspect at Island Car Rentals  
Car Sales Division**

2 Worthington Avenue, Kgn. 5 • Tel 968-4571 / 754-0960



## Appendix 3: List of Invitees

---

**List of Invitees**  
to the  
**Public Meeting**  
for the  
**The Request for Amendments to Environment Permits and Beach**  
**Licences Issued for the Proposed Natural Gas Storage and Distribution**  
**System at Old Harbour Bay, St. Catherine**  
held at  
**Old Harbour Primary School Marlie Acres, Old Harbour St. Catherine**  
Wednesday, January 10, 2018

---

1. Lieutenant Commander (Retired) Paul Wright, CEO- National Fisheries Agency
2. Mr. Peter Knight, CEO, National Environment & Planning Agency
3. Inspector Simon McCormack – Old Harbour Police Station
4. Mr. Everald Warmington, Member of Parliament, South West St. Catherine
5. Mr. Rudyard Mares, PNP Caretakes, South West St. Catherine
6. Mr. Adrian Samuda, Interim President, Old Harbour Chamber of Commerce
7. Major Clive Davis, Director General, Office of Disaster Preparedness and Emergency Management
8. Mr. Emanuel DaRosa, President, Jamaica Public Service Company Limited
9. Mr. Audley Gordon, Executive Director, National Solid Waste Management Authority
10. Mayor Norman Scott, Mayor of Spanish Town
11. Captain Hopeton DeLisser, Vice President Harbours and Port Services, Port Authority of Jamaica
12. Ms. Suzanne Stanley, CEO, Jamaica Environment Trust
13. Ms. Ingrid Parchment, Executive Director, Caribbean Coastal Area Management Foundation
14. Mr. Raymond Spencer, Commissioner, Jamaica Fire Brigade
15. Mr. Samuel Heron, Parish Manager, Social Development Commission
16. Mr. Hopeton Herron, Deputy Director General, Office of Utilities Regulation

## Appendix 4: Sample of Invitation Letters



### CONRAD DOUGLAS & ASSOCIATES LTD.

PROJECT PLANNING, DEVELOPMENT MANAGEMENT, ENVIRONMENTAL MANAGEMENT,  
ENGINEERING & TECHNICAL CONSULTANTS

14 Carvalho Drive, Kingston 10, Jamaica, W.I.

Telephone: (876) 929-8824, 929-0023/25 Fax: (876) 960-2014.

E-mail: info@cdaestech.com, cdaestech@hotmail.com, conraddouglasnassociatesltd@gmail.com.

Website: www.cdaestech.com

January 5, 2018

Mr. Everald Warmington, MP  
Member of Parliament  
South West St. Catherine  
40 East Street  
Old Harbour  
St. Catherine

Dear Mr. Warmington,

**Invitation to a Public Meeting for Amendment to the Proposed LNG Storage  
and Distribution System for Old Harbour Bay**

On behalf of our client, NFE South Holdings Limited, we take pleasure in inviting you to a Public Meeting on **Wednesday, January 10, 2018 at The Old Harbour Primary School** in Marlie Acres, Old Harbour, St. Catherine commencing at 5:30 p.m. for Amendment to the Proposed LNG Storage and Distribution System for Old Harbour Bay.

This meeting is to provide information and to obtain the views of the immediate communities on the proposed project.

We look forward to your attendance.

With kind regards.

Yours sincerely,  
**CONRAD DOUGLAS & ASSOCIATES LIMITED**

Conrad G.C. Douglas, C.D., Ph.D  
Executive Chairman and Principal Consultant

cc. Mr. Doran Beckford, Snr. Process & Environmental Engineer

*Quality Service at its Best*

www.cdaestech.com

DIRECTORS: DR. CONRAD G.C. DOUGLAS, C.D., B.Sc., Ph.D., M.J.I.M., M.J.I.E., Executive Chairman & Principal Consultant \* LYNDEN NUGENT, B.Sc. Chem. Eng. (Hons), MBA (Finance), Dip. Man. Studies, M.J.I.M.  
MELISSA M. DOUGLAS, B.A. (UWI), LL.B. (LOND.) A.K.C. (LOND.), LEC \* DORAN BECKFORD, B.Eng. (Chemical), MBA (Banking & Finance), Dip. Bus. Admin.

**Appendix 5: Flyer**

---

# INVITATION

---

FURTHER TO ENVIRONMENTAL IMPACT ASSESSMENT TITLED,  
*“NFE SOUTH HOLDINGS LIMITED LNG TERMINAL AND PIPELINE  
PROJECT, OLD HARBOUR, ST. CATHERINE”*

**NFE SOUTH HOLDINGS LIMITED**

INVITES YOU TO A

**PUBLIC MEETING**

ON THE

**AMENDMENT TO ENVIRONMENTAL PERMITS AND  
BEACH LICENSES ISSUED**

FOR

**THE PROPOSED ESTABLISHMENT OF A LNG TERMINAL  
AND PIPELINE PROJECT, OLD HARBOUR, ST. CATHERINE**

**VENUE:** OLD HARBOUR PRIMARY SCHOOL, MARLIE  
ACRES, OLD HARBOUR, IN THE PARISH OF ST.  
CATHERINE

**DATE:** WEDNESDAY, JANUARY 10, 2018

**TIME:** 5:30 P.M.

---

Information providing the Proposed Amendments are available for review at:

- NEPA Document Centre
- Old Harbour Bay Fishing Village c/o Sue Beckford
- Old Harbour Branch Library
- [www.nepa.gov.jm](http://www.nepa.gov.jm)
- [www.cdaestech.com](http://www.cdaestech.com)

Comments and queries can be sent to NEPA at: [applications@nepa.gov.jm](mailto:applications@nepa.gov.jm)

**NFE SOUTH HOLDINGS LIMITED**



---

For inquiries, please call 929-0023/0025/8824 or email us at: [cdaestech@hotmail.com](mailto:cdaestech@hotmail.com)  
or [conraddouglasnassociatesltd@gmail.com](mailto:conraddouglasnassociatesltd@gmail.com)

## Appendix 6: Town Cry Dates and Voice Recorded Script

**Table 2: NFE South Power Holding Ltd Town Cry Dates**

Town Cry Dates
Sunday, January 7, 2018
Monday, January 8, 2018
Tuesday, January 9, 2018
Wednesday, January 10, 2018

NFE South Holdings Limited

invites you to a

**Public Meeting**

on the

**Amendment to Environmental Permits and  
Beach Licenses Issued**

for

The Proposed Establishment of a LNG Terminal  
and Pipeline Project, Old Harbour, St. Catherine

**Venue:** Old Harbour Primary School, Marlie Acres, Old  
Harbour, St. Catherine

**Date:** January 10, 2018

**Time:** 5:30 P.M.

**Come, be informed!**

**Share your views!**

**It's your community!**



## Appendix 7: Register

NFE South Holdings Limited Public Meeting January 10, 2018			
Name	Contact #	Community	Affiliation
Victoria Grant	754 -	NEPA	NEPA
Henry Dean	355 9831	Salt River	
Seitchin Lynn	879 1307	JPS	
Cal Stewart	—	SALT River	
Michael Williams	466-6714	Salt River	
Pamela Robinson	—	South River	
Nessive Brown	—	Salt River	
Alison Wright	—	Salt River	
Clifford R. R. R.	4963451	Salt River	
A. Robinson	—	Salt River	
Harley Dan	—	Salt River	
Fabian Gordon	387-1305	Old Harbour Bay	Fisheries Division
Phayne Lynn	864-8064	N.E.E	1
Claudette Thoma	990-3229	Old Harbour Glen	Old Harbour
Michael J. J.	381-1330	Consultant	Primary
Sharon Thompson	569-0537	Salt River	Fishing
Noel Watson	403-7887	—	JPS
Dominic Jones	559 0296	—	NSWMA
James Lee	775 2319	J.F.I.S	
Simon McCormick	577-5393		Police JCF



NFE South Holding Limited Public Meeting January 10, 2018			
Name	Contact #	Community	Affiliation
Elena Carter	786-848-4650		NFE
George Goode	899-9970 / 983-2218	Old Harbour Primary School	Old Harbour Primary
Tom Carlos Yancey	+1(325) 407 6492	Old Harbour	NFE
John Morgan	754 7540		NEPA
Rolph Henderson	871-7053	Old Harbour Bay	
Doneth Henderson		Old Harbour Bay	
Dr. Conrad Douglas	929 8824		
Dr. Mark Richards	929. 8824		
Mr. Doran Beckford	929-8824		
Mr. Antoine White	929 8824		
Mr. Reza Adams	929 8824		
Ms. Carissa Broadhead	929 8824		
R. D. Oll	<del>853 953 9134</del> 853 9734	Salt River	
Marine Campbell	799 9438	SALT River.	
Edson Z. Cruz	375-1078	SPANISH TOWN	NSWMA
O. K. S. Cruz	412 6655	SALT RIVER	
D. Robinson	682 10525	SALT RIVER	
Anthony Elliot	373 2897		
42 NFE			
Edward Blue	754-7540		NEPA
Rev. Sandra Membran	478-7381	Jamaica Free Baptist Church	Old Harbour
Charles Moya	362 9211	Old Harbour	Old Harbour
Annette McKay	868-9227	Claremont Heights	Primary
Nolwen Davis	990 3574		NFE
Lam Lee	929 8824		



Name	Contact #	Community	Affiliation
Randy Franklin	860-3788	Claremont Heights	OTDA
Prince Baylis Reyer	340-3272	Old Harbor	JEP
Dennis Campbell	824 4080	Old Harbor	

Photographs of Public Meeting  
Old Harbour Primary School – January 10, 2018





SALT RIVER FISHERS

JANUARY 7, 2018

NAME	AFFILIATION	CONTACT NUMBER
Oral Roberts	Pro	
Clevis Row	Fisherman	412 6655
(Cleveland Perry	Fisherman	496-2451
Sydney Donohue	Painter	3941589
Shawn Thompson	Fisherman	483 1349
Heley Dale	Fisherman	569-0537
Horace Grant	"	518-3306
Richard Daves	"	853-9734
Carl Stewart	"	
Headley Brown	"	331-2728
A. Johnson	"	447-3985
Leroy Beans	"	355-9831
Vincent Salesman	"	616-3170
David Robinson	"	566-7309
Velma Bartley	"	872-9193
Denville White	Fisherman	401-6650

## Appendix 8: Presentation

### PUBLIC CONSULTATION MEETING

Old Harbour Primary School, January 10, 2018 at 5:30 pm



#### **PROJECT:**

Public Meeting for the Request of Amendments to Environmental Permits and Beach Licences Issued to NFE South Holdings Limited for the Establishment of an LNG Terminal And Pipeline Project, Old Harbour, St. Catherine

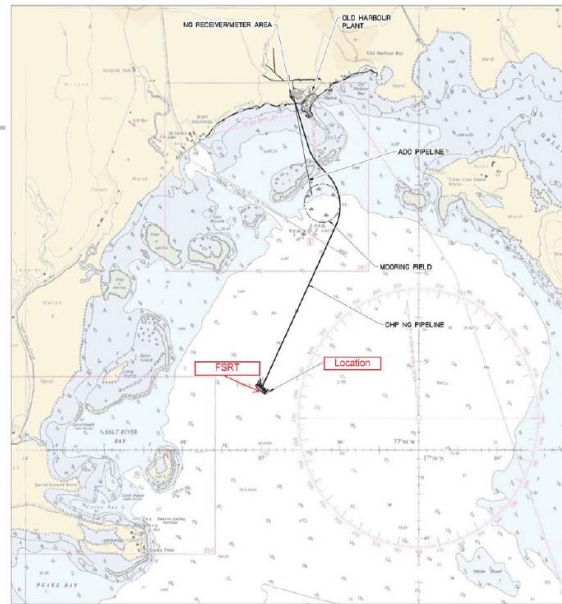
#### **PROPOSERS:**

NFE South Holdings Limited



#### **ENVIRONMENTAL CONSULTANTS:**

Conrad Douglas & Associates Limited



## Introduction

- NFE South Holdings Limited (NFE) was chosen by the Jamaica Public Service Company Limited (JPS) to supply Natural Gas (NG) to Old Harbour Power Station Plant.
  - NFE South Holdings Limited is an affiliate of New Fortress Energy and sponsored by Fortress Investment Group. Fortress Investment Group is a highly diversified global asset management firm with approximately \$70.64 billion of assets under management and an experienced investor in transportation, infrastructure, & energy assets around the world.
    - Founded in 1998, Fortress Investment Group LLC (NYSE:FIG) was the first New York Stock Exchange listed alternative asset manager
    - Headquartered in New York, Fortress has 1,130 employees across 15 offices worldwide
    - NFE has a strong commitment to environmental protection and corporate responsibility to ensure that their projects meet all regulations while maintaining as small as possible project footprint with as little risks of environmental damage as possible.





## Project Components

The permits and licences have been issued by the National Environment & Planning Agency (NEPA) for the following four (4) components:

1. Storage of Liquefied Natural Gas at sea in Portland Bight
  - Docking facilities to be installed to host the storage vessel
2. Regasification of Liquefied Natural Gas to Natural Gas on a platform at sea in Portland Bight
  - Platform to be installed to host the regasification unit
3. Conveyance of Natural Gas through steel pipes to JPSCo Natural Gas Fired Power Plant on land at Old Harbour Bay (now under Construction).
  - Pipeline to be laid for NG delivery
  - Pipeline to be trenched and directionally drilled (originally permitted)
4. Quantify gas delivered to JPSCo onshore.
  - Metering station to be built to measure volume of natural conveyed to JPSCo.

An EIA was submitted based on preliminary designs to execute these components of the supply network. The amendment is being requested for the above 1, 2 and 3 components.



## Environmental Permits and Beach Licenses Granted by NEPA



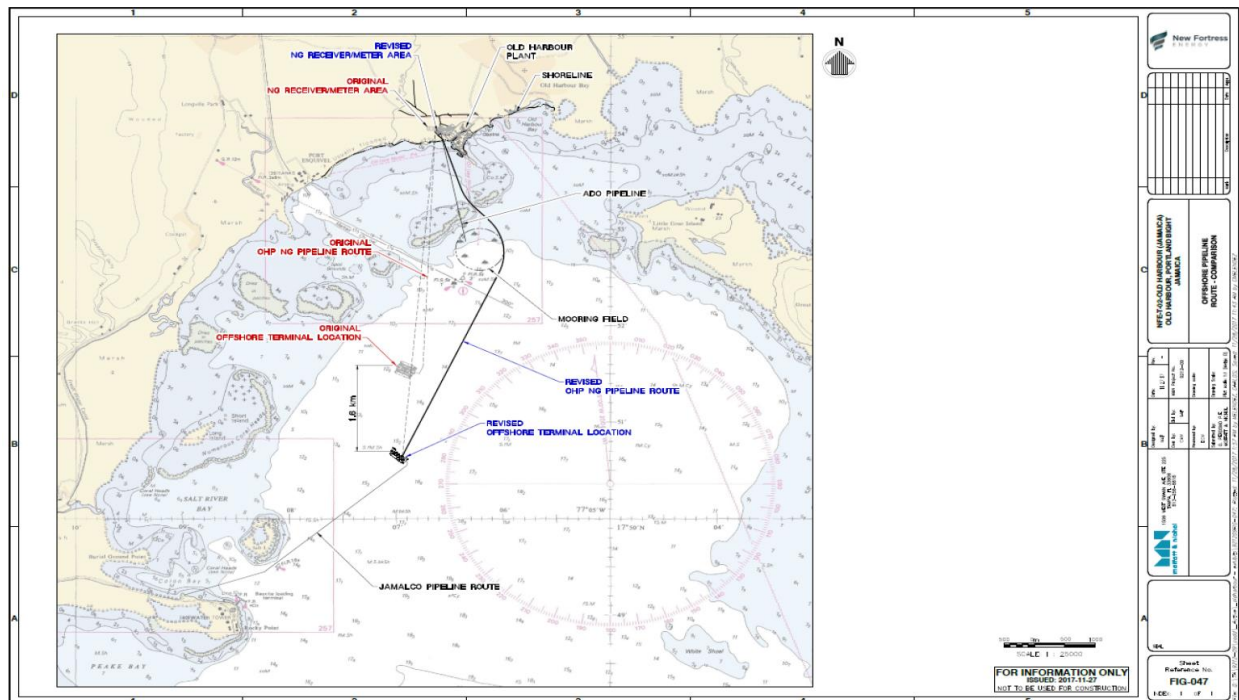
- **Three (3) Environmental Permits, which are still in force are as follows:**
  - Environmental Permit # 2016-14017-EP00252 – Construction of an LNG Terminal – issued 9<sup>th</sup> December 2016,
  - Environmental Permit # 2016-14017-EP00251 – Construction of an LNG and ADO Pipeline issued 20<sup>th</sup> December 2016,
  - Environmental Permit # 2016-14017-EP00416-Wetland Modification issued 20<sup>th</sup> December 2016
- **Three (3) Beach Licences are as follows:**
  - Beach Licence NO.: L3622A –Placement of Pipelines issued 20<sup>th</sup> December 2016,
  - Beach Licence NO.: L3622B – Placement of 78 Pylons issued 20<sup>th</sup> December 2016
  - Beach Licence NO.:L3622C - CAPITAL DREDGING OF 557m<sup>3</sup> OF MATERIAL



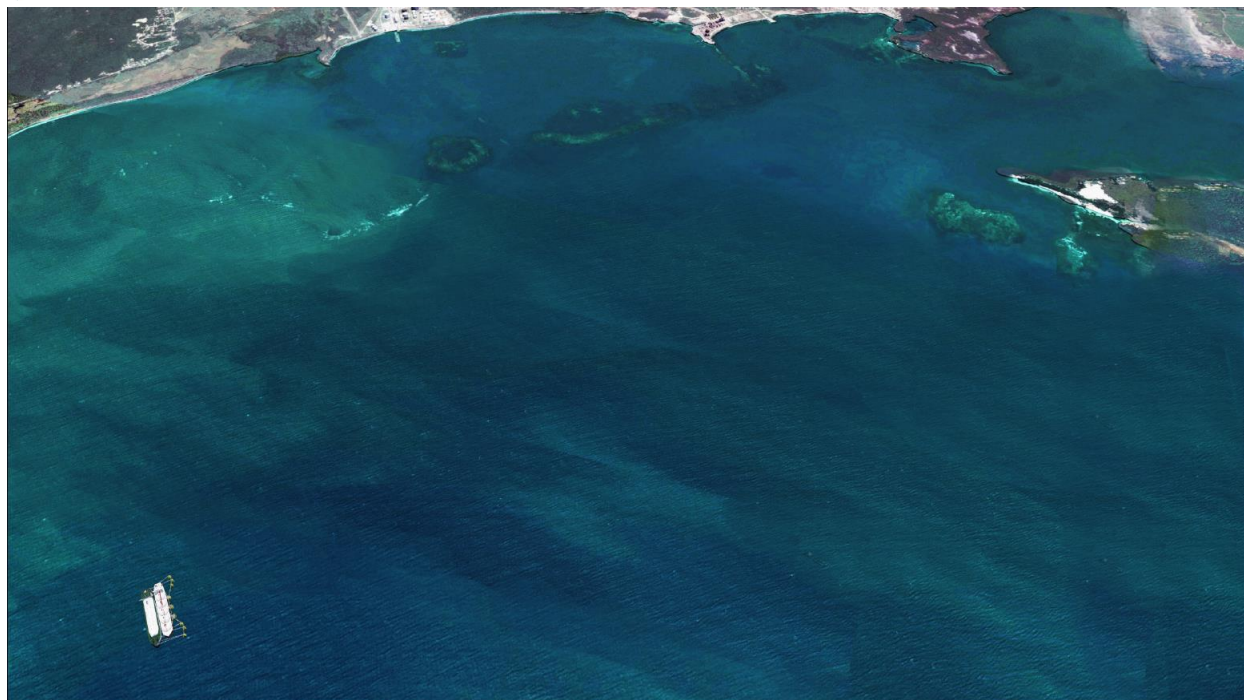


## Proposed Amendments

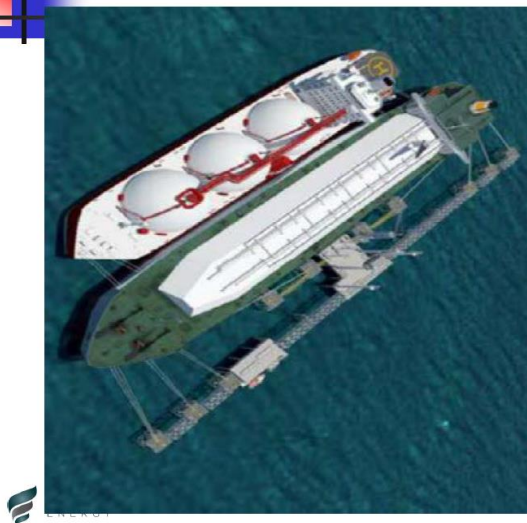
1. The location of unloading and storage facility – 1.5 km south of original location.
2. The type of LNG storage facility – Floating Storage and Regasification Terminal to Replace Floating Storage Unit.
3. The location of the re-gasification unit – Re-Gasification Unit located on Storage Vessel not on a Platform external to the Vessel.
4. The route for the pipeline – Pipeline to traverse gap in reef instead of going under the reef.
5. The pipelaying technology – Pipeline to be trenched for its entire length instead of Horizontal Directional Drilled in a section under the reef.
6. The location of the metering station – station to be re-aligned.
7. The logistics of the management of Automotive Diesel Oil – JPSCo to manage ADO storage.



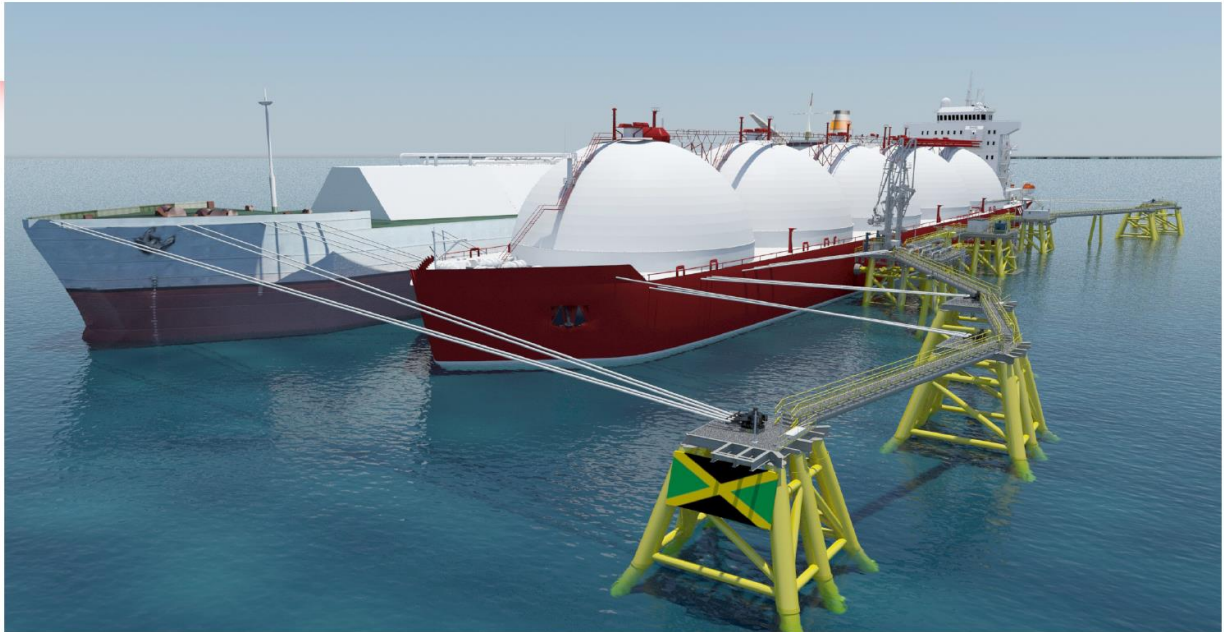




## Concepts of Permitted and Amended Layout of LNG Storage Facility

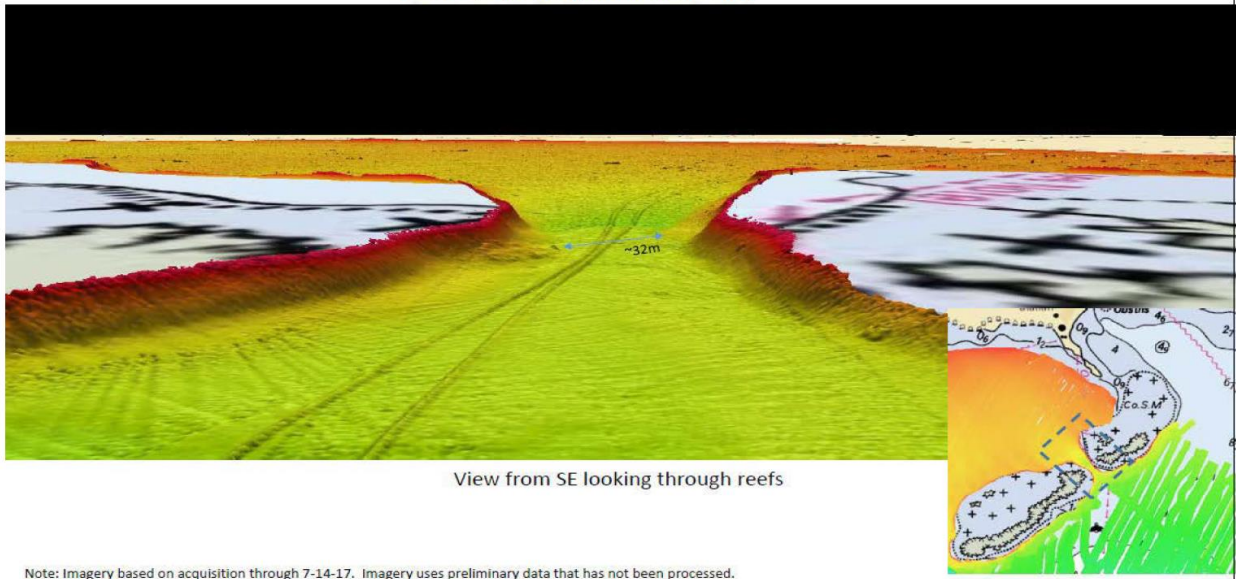


## Artist Concept of FSRT and Docking Facility



## Sonar Imaging of the Gap in the Reef

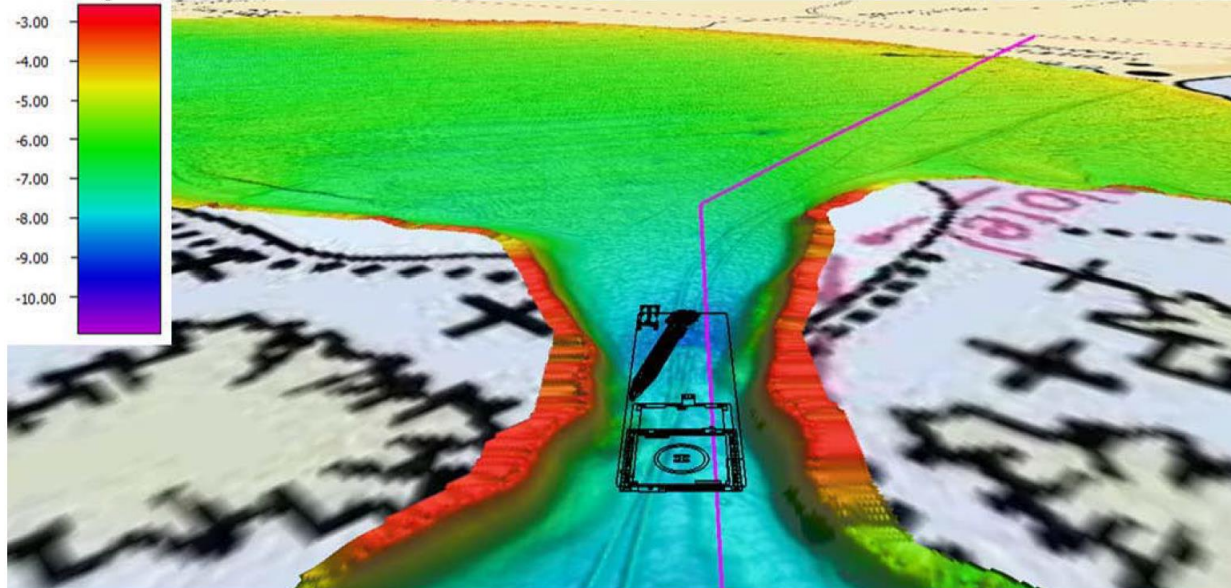
Route 1, Option 1 (Old Harbour- east)



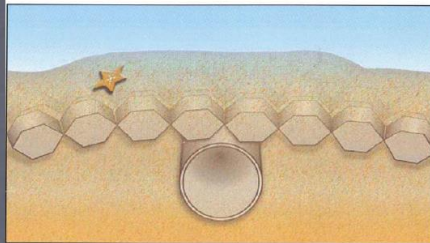
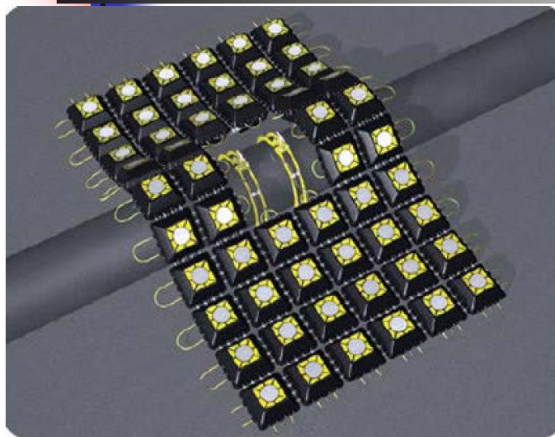
Note: Imagery based on acquisition through 7-14-17. Imagery uses preliminary data that has not been processed.

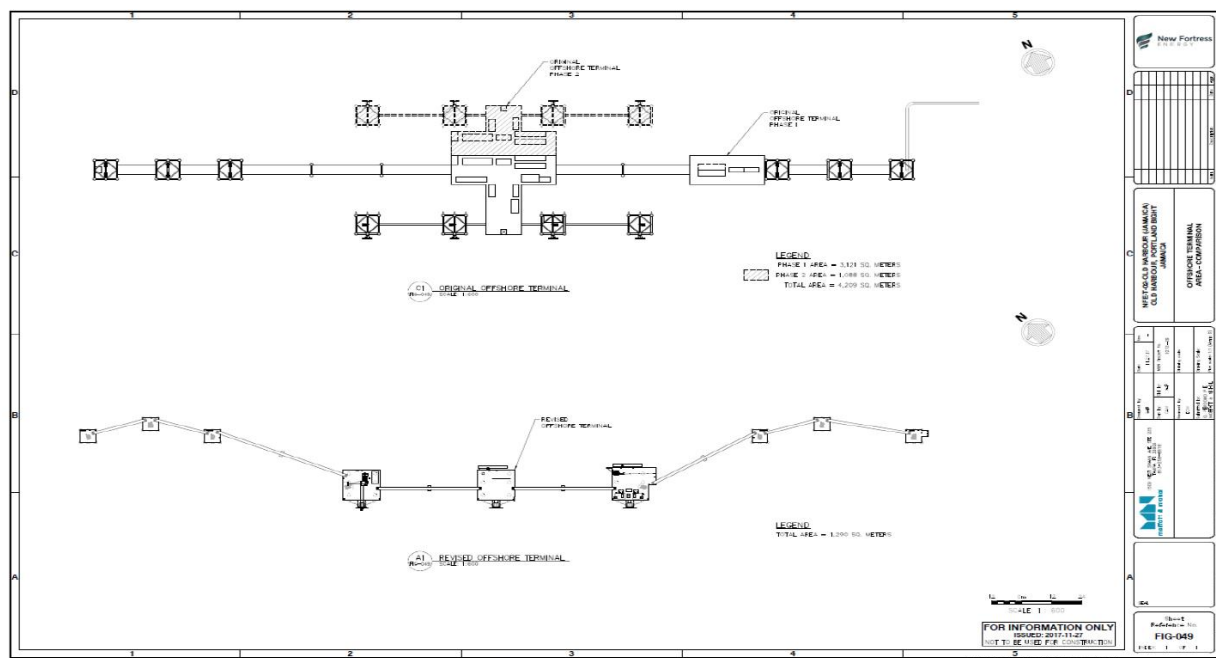
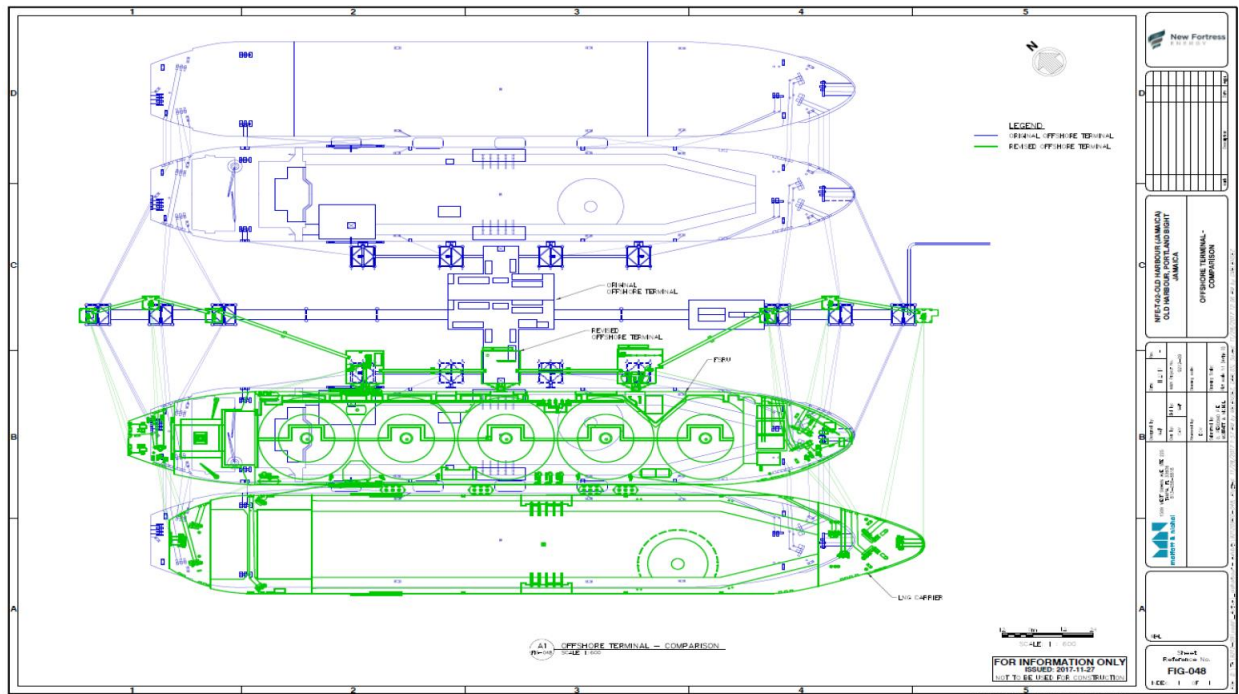


## Model of Pipelaying Barge Traversing Gap in Reef

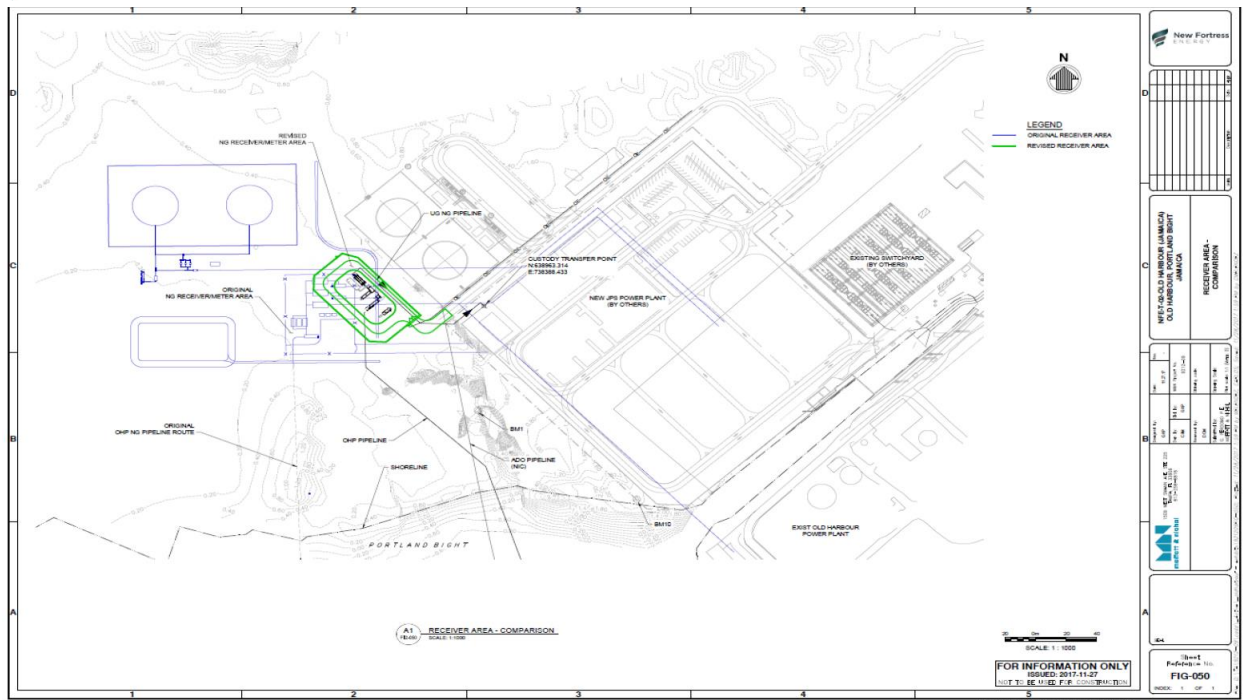


## Pipe Covered with Concrete Mat





**Original Footprint – 3121 square meters**  
**New Footprint – 1290 square meters**



## Potential Impacts and Risks

- A. Siltation during pipelaying – trenching using water jets to excavate and cover pipes will reduce plume generation.
  - Area is a high silt area so flora and fauna has adapted to short periods of elevated turbidity
- B. Risk of adverse impact to coral reef – this will be reduced with the Amendment proposed. The depth of the coral reef is uncertain and this increases the likelihood of damage to the structure if Horizontal Directional Drilling equipment impacts the reef.
- C. Floating Storage and Re-gasification Terminal (FSRT) - reduces the impact of storms on the facility as the critical equipment for storage and delivery of Liquefied Natural Gas (LNG) and Natural Gas (NG) can be removed from the area when adverse weather and hurricanes approach the island.



## Monitoring and Evaluation

To be done throughout the duration of:

1. Pre-construction
2. Construction
3. Operation

For activities both in the sea and on land.



## Conclusions

The project has major benefits to the environment in terms of:

1. Environmental health
  2. Human health
  3. Climate Change
- The amendments being proposed for the permits and licenses, which are presently in force, further reduce the environmental impacts and reduce the risk to the resources of the marine environment during construction and operations.
  - In general the development and design of the project has been guided by the principles of Green Engineering.

Overall, the project is an excellent example of sustainable development since it brings major macro-economic and micro-economic benefits in terms of job creation while at the same time bringing improved environmental health, human health and climate change benefits, this will be achieved through contributing to major decreases in the emission of greenhouse gases.







# THANK YOU



## Appendix 9: Fact Sheet



### PUBLIC CONSULTATION MEETING

Old Harbour Primary School, Wednesday, January 10, 2018 at 5:30 pm

#### FACT SHEET

<b>PROJECT:</b>	Amendments to Permits & Licences for the already NEPA permitted Liquefied Natural Gas (LNG) Terminal and Natural Gas (NG) Distribution Network within Portland Bight, Old Harbour Bay, Old Harbour, St Catherine.
<b>PROPONENT:</b>	NFE South Holdings Limited
<b>ENVIRONMENTAL CONSULTANTS:</b>	Conrad Douglas & Associates Limited

The objective of the meeting is to inform and obtain the views of members of the surrounding communities of the proposed amendments to the already permitted project for Old Harbour Bay. The presentation on the proposed amendments at the meeting will be done by NFE's Environmental Management Consultants, **Conrad Douglas & Associates Limited (CD&A)**. This will be followed by a question and answer session. The meeting will be recorded *ad verbatim* (word-for-word). CD&A will provide information on the following:

**WHAT is involved in the amended project and what are the Amendments?** The project involves installing:

1. A docking facility for a Floating Storage and Regasification Terminal (FSRT) to store up to 170,000 m<sup>3</sup> of LNG, which has already been permitted by the National Environment & Planning Agency/Natural Resources Conservation Authority. The FSRT will re-gassify the LNG to NG for supply to JPSCo's Old Harbour Bay Power Plant.

**The amendment involves the reduction in the size of the docking facility thereby reducing its footprint.**

2. A secured 7km pipeline (buried beneath the seafloor and underground on land) for the conveyance of natural gas (NG-Methane – CH<sub>4</sub>) from the already permitted FSRT at sea to JPSCo's Power Plant at Old Harbour Bay.

**The amendment to the pipeline involves a change in its route to reduce the potential impacts and to reduce the risks to reefs in the Bay by passing the pipeline through a suitable existing opening in the reef rather than drilling under the reef.**

3. A metering station (on-land at Old Harbour Bay) to measure NG which will be supplied to JPSCo Power Plant now under construction.

**The amendment involves an adjustment in the location of the metering station to minimize potential impacts to wetlands and reduce potential security risks** (See schematic diagrams, Figures 1, 2 and 3 below).

The Amendments are not concerned with the JPSCo Gas Fired Old Harbour Plant, which is now under construction.

**WHO is proposing the Amendment to the Project?**

1. **NFE South Power Holdings Limited: An international company already working in Jamaica, which has already successfully established the now operating Bogue NG fired**



**JPSCo power plant in Montego Bay with major improvements in the efficiency of electricity generation, air quality and cost for JPSCo and Jamaica. New Fortress Energy (NFE) provides the following services:**

- a. energy,
  - b. logistical services,
  - c. financing and capital investment to end users worldwide who are seeking to convert their operating assets from:
    - i. diesel
    - ii. or heavy fuel oil
    - iii. to natural gas
2. **JPSCo** – will use natural gas to fuel the power plant now under construction to generate electricity for the national grid

**WHERE will the project be carried out?**

1. The Proposed Terminal and docking facility will be built in the sea in Old Harbour Bay about 7 km south of the JPSCo Old Harbour Bay Power Station.
2. The Proposed Pipeline will be installed:
  - a. Beneath the seafloor north from the FSRT in the sea through the reef to the JPSCo Old Harbour Bay Power Plant, now under construction.

**WHEN will the project be implemented?**

The project has already been permitted with Environmental Permits & Licences already issued by NEPA.

- Construction of the metering station on land is estimated for start-up in January 2018.
- Commissioning and start-up of operations is estimated for about June 2018.

**WHY is this project being done?** The project seeks to:

- contribute to the Government of Jamaica's (GoJ's) Energy Mix and Economic Growth & Job Creation policies as well as to meet the goals of Vision 2030 by increasing the use of natural gas in Jamaica.
- increase the electricity generating capacity to the national grid thereby facilitating the reduction of electricity cost, in general.
- Natural gas is a cleaner fuel than Heavy Fuel Oil which will bring several environmental, human health and climate change benefits through improved air quality.

**HOW will the project be implemented?**

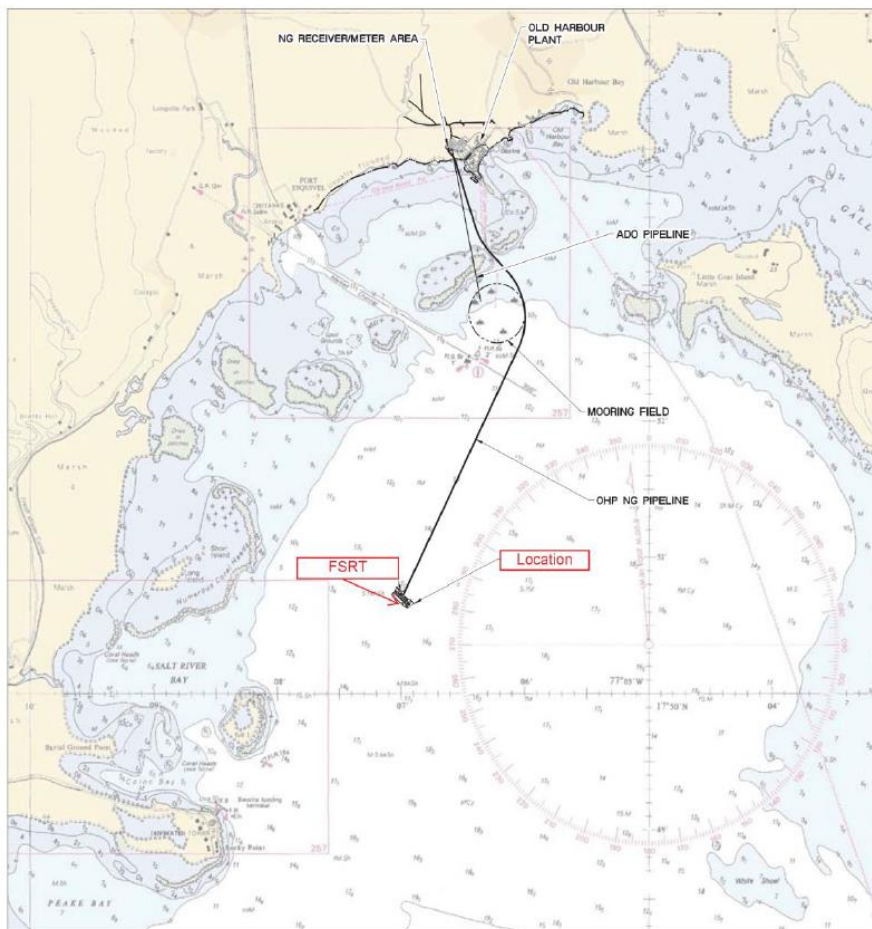
The project has been designed using reputable international and national engineers. The project will be implemented in compliance with all international and national policies legislations, regulations and standards using the industry best practices for all components and phases of the project.

Some relevant major features of the project are as follows:

- Several hundred jobs will be created during construction and during operations.
- There will be demand for the supply of local goods and services.
- There will be major macro-economic and micro-economic benefits

The project will avoid and/or mitigate potential major negative impacts in the marine and coastal environments during all phases of its development and implementation as well as improved air quality and human health.

Comprehensive studies have been carried out to identify and manage all potential negative impacts for all phases of the project.



**Figure 1:**  
Proposed  
new FSRT  
location (1.6  
km south of  
permitted  
location)



**Figure 2:**  
Proposed  
amendment –  
larger storage  
and  
regasification  
on FSRU and  
no terminal  
for  
regasification



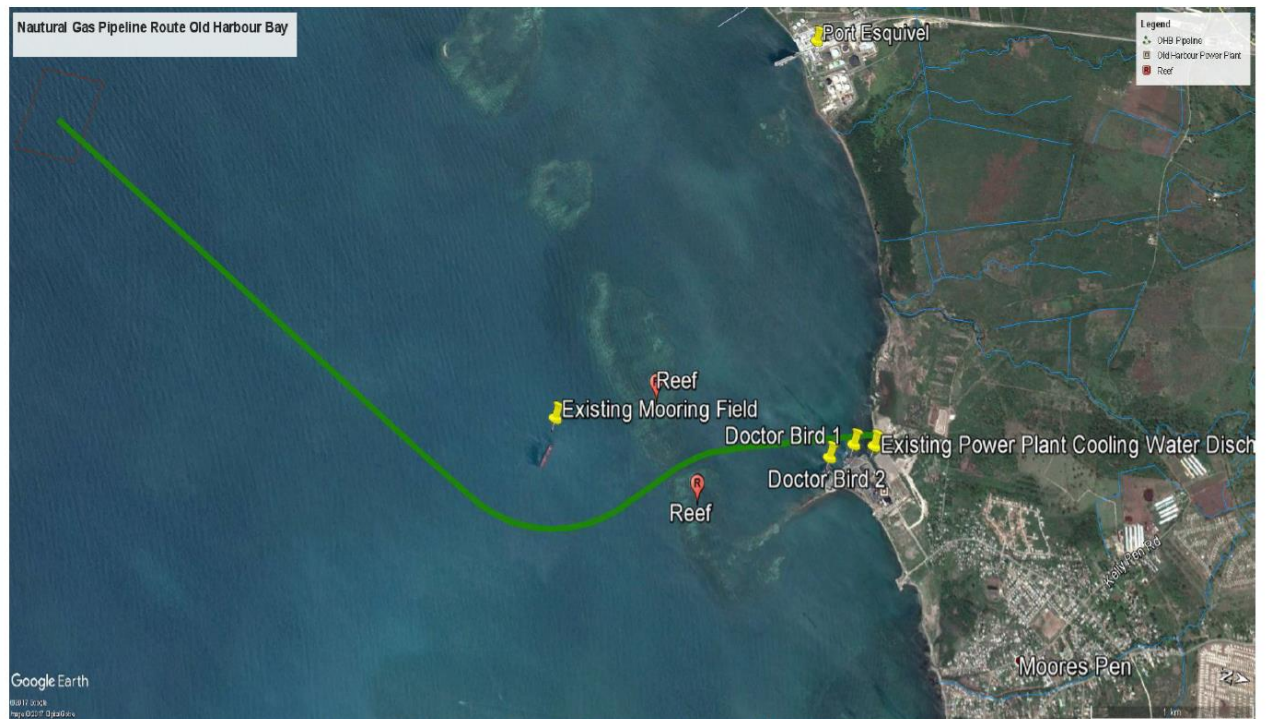


Figure 3: Proposed project location plan and layout