

SUBDIVISION PLAN **FLORENCE HALL - 828 LOTS** **TREWLANY**

Vol. 1109 Fol. 438,
 Vol. 1109 Fol. 440,
 Vol. 1109, Fol. 443

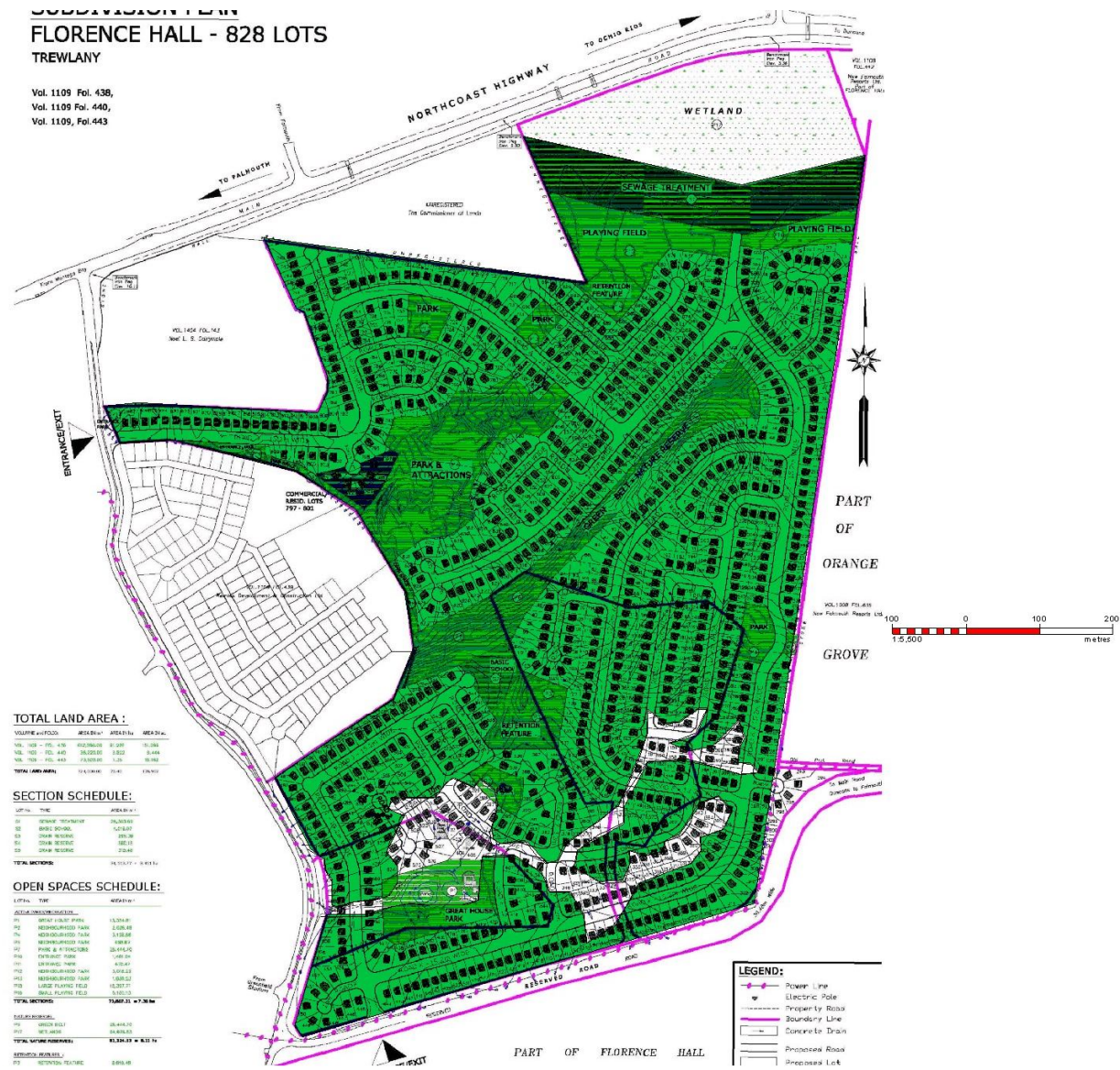


Plate 1 Florence Hall Vegetative Cover (2003 Google Earth Imagery)

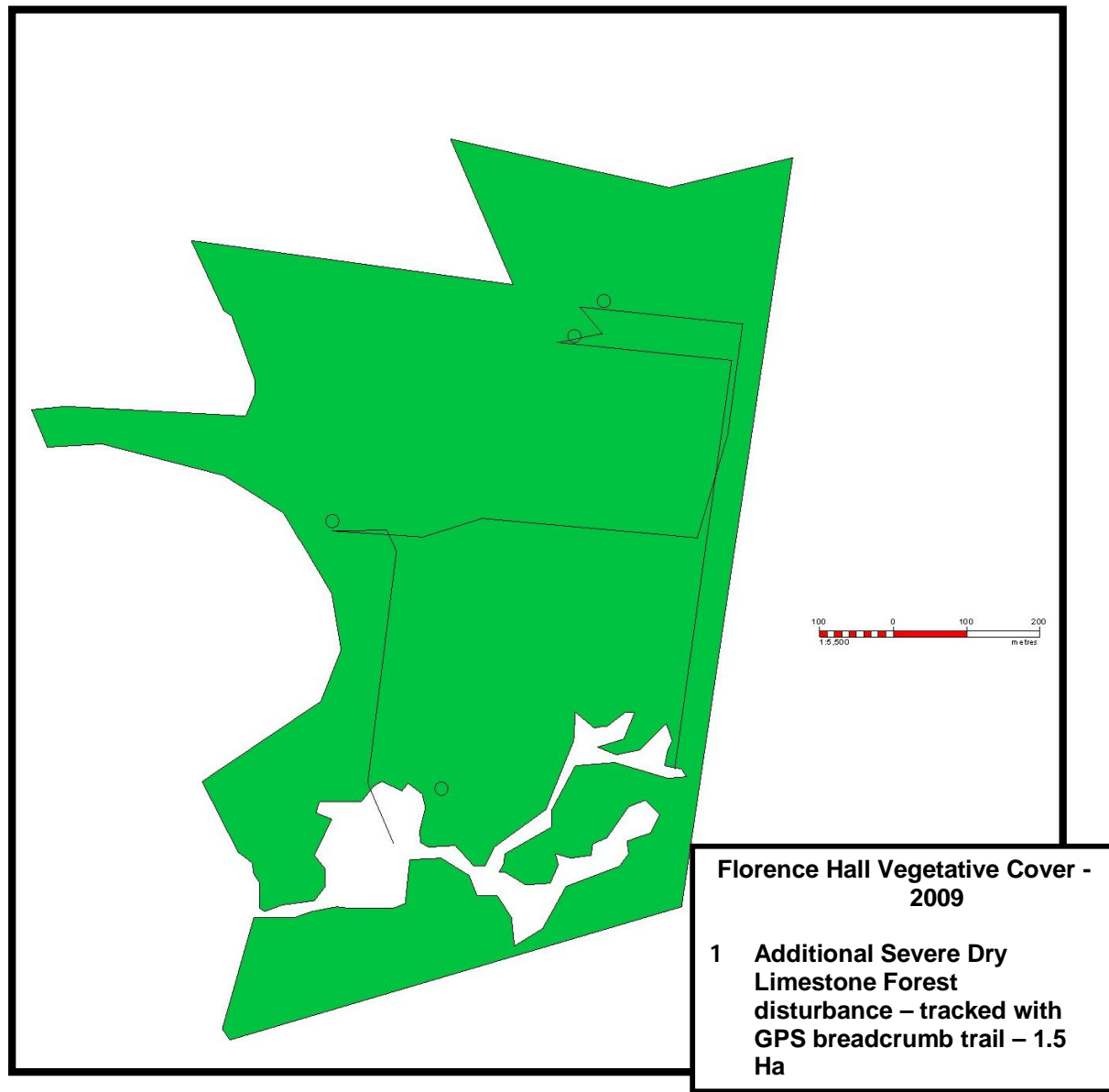


Plate 2 Florence Hall Vegetative Cover (2009)

**SUBDIVISION PLAN
FLORENCE HALL - 828 LOTS
TREWLANY**

Vol. 1109, Pgs. 438,
Vol. 1109 Pgs. 440,
Vol. 1109, Pgs. 443



TOTAL LAND AREA:

ACRES	SQ. FT.	PERCENT
10.00	696,960	100.00
10.00	696,960	100.00
10.00	696,960	100.00
10.00	696,960	100.00
10.00	696,960	100.00
10.00	696,960	100.00
10.00	696,960	100.00
10.00	696,960	100.00
10.00	696,960	100.00
10.00	696,960	100.00

SECTION SCHEDULE:

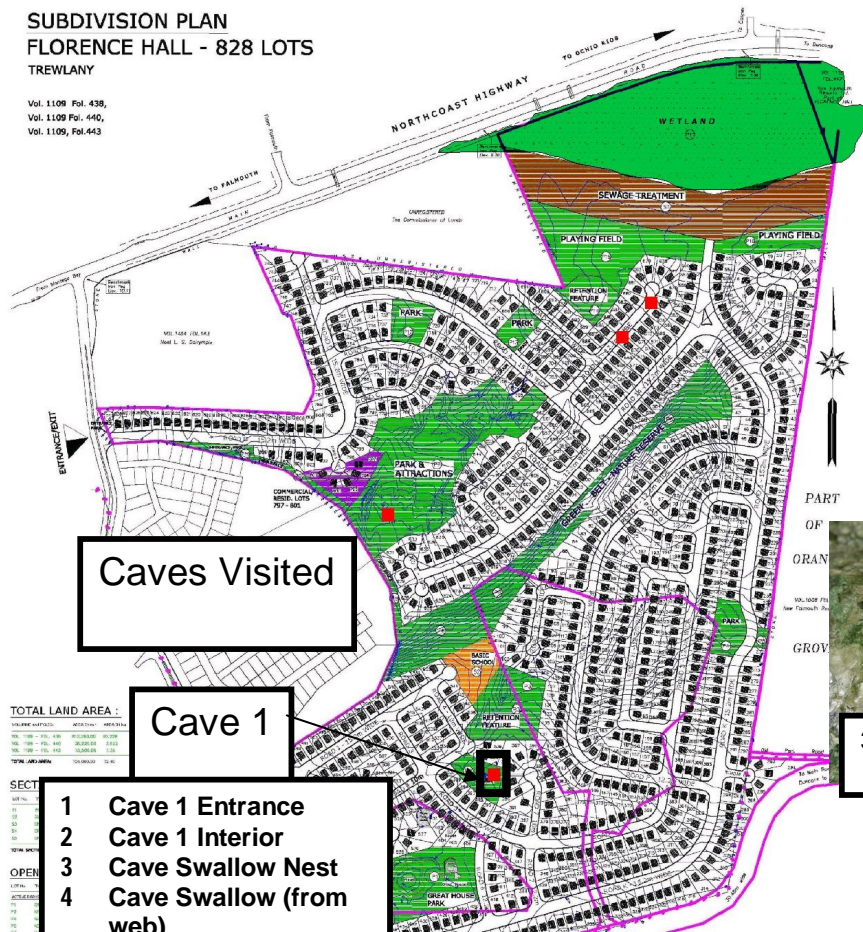
- 1 Wetland west boundary
- 2 White mangroves
- 3 Black Mangroves (dominant wetland vegetation type)
- 4 Red Mangroves at Highway drains
- 5 Wetland east boundary



Plate 3 Description of the wetland section of the Florence Hall Property

**SUBDIVISION PLAN
FLORENCE HALL - 828 LOTS
TREWLANY**

Vol. 1109, Fol. 438,
Vol. 1109, Fol. 440,
Vol. 1109, Fol. 443



Caves Visited

Cave 1

- 1 Cave 1 Entrance
- 2 Cave 1 Interior
- 3 Cave Swallow Nest
- 4 Cave Swallow (from web)
- 5 Fruit Bat droppings with seeds

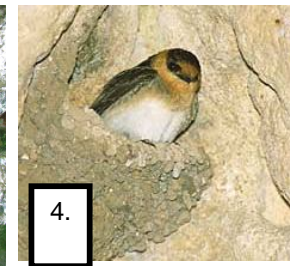
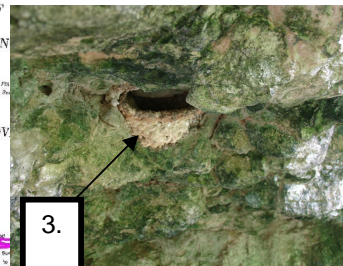
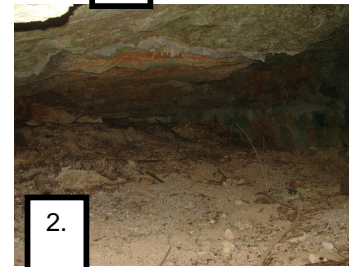


Plate 4 Description of Cave 1 on the proposed project site at Florence Hall

**SUBDIVISION PLAN
FLORENCE HALL - 828 LOTS
TREWLANY**

Vol. 1109 Fol. 438,
Vol. 1109 Fol. 440,
Vol. 1109, Fol. 443

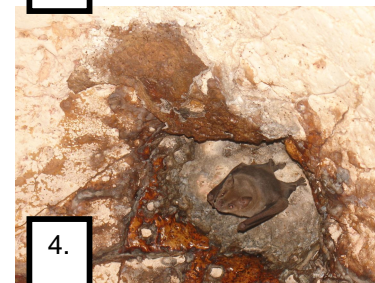
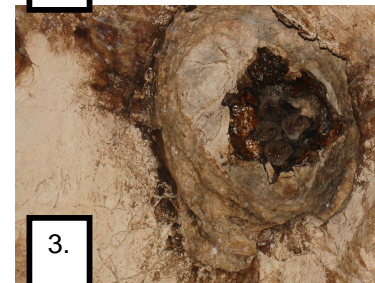
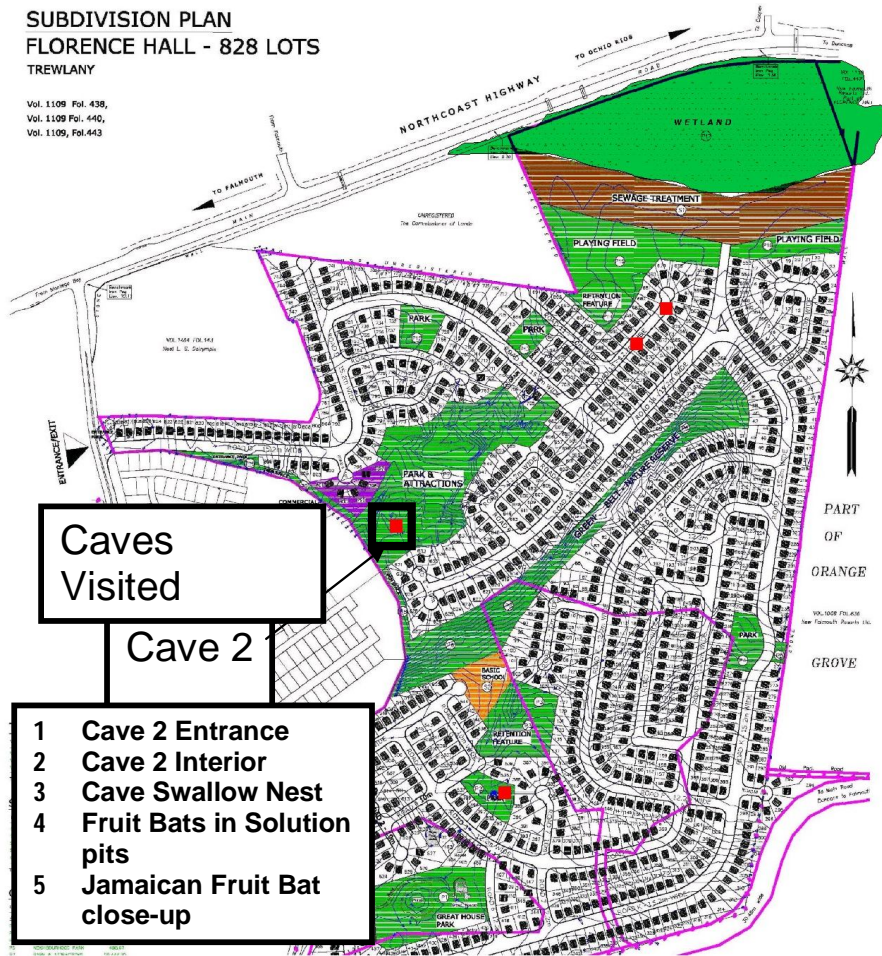


Plate 5 Description of Cave 2 on the proposed project site at Florence Hall

**SUBDIVISION PLAN
FLORENCE HALL - 828 LOTS
TREWLANY**

Vol. 1109 Fol. 438,
Vol. 1109 Fol. 440,
Vol. 1109, Fol. 443

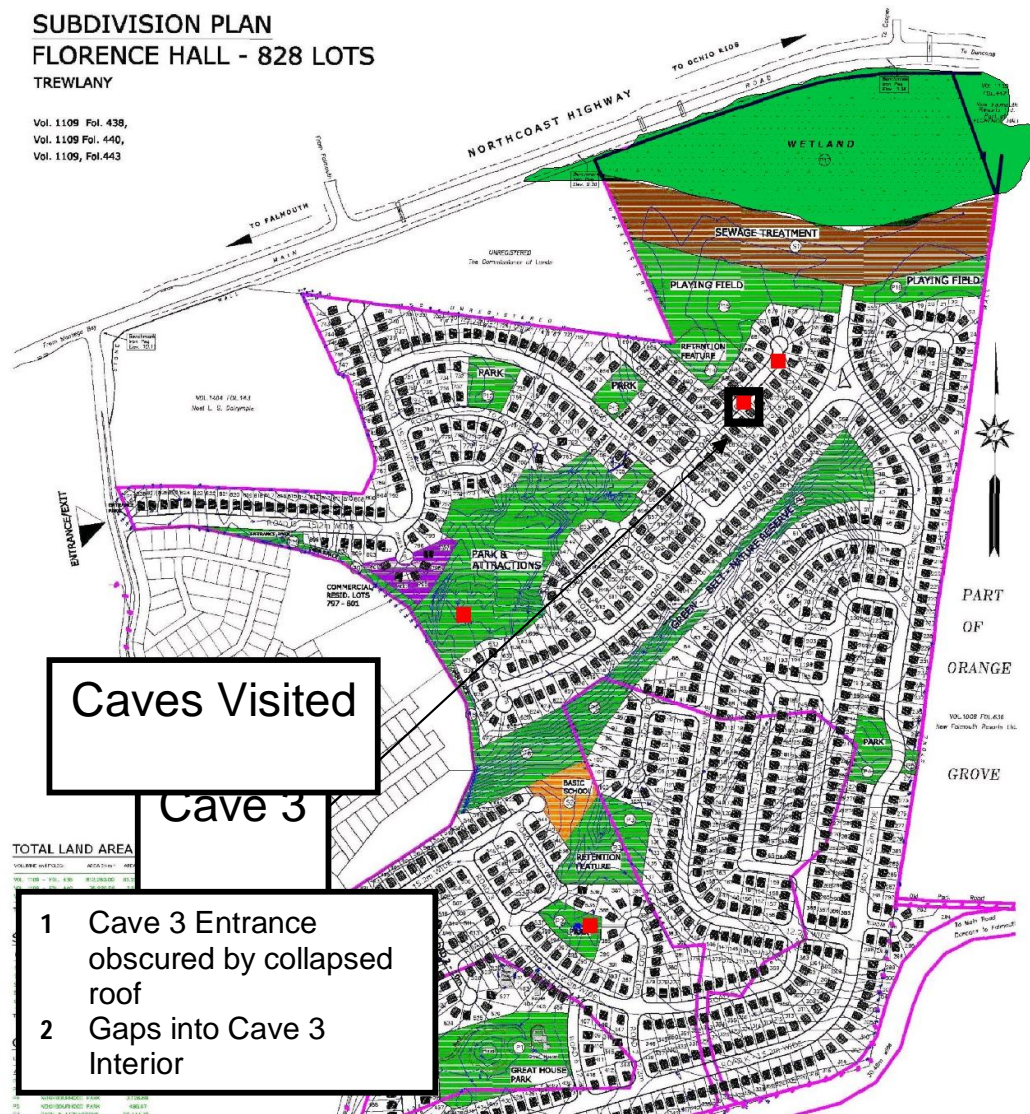


Plate 6 Description of Cave 3 on the proposed project site at Florence Hall

**SUBDIVISION PLAN
FLORENCE HALL - 828 LOTS
TREWLANY**

Vol. 1109 Fol. 438,
Vol. 1109 Fol. 440,
Vol. 1109, Fol. 443

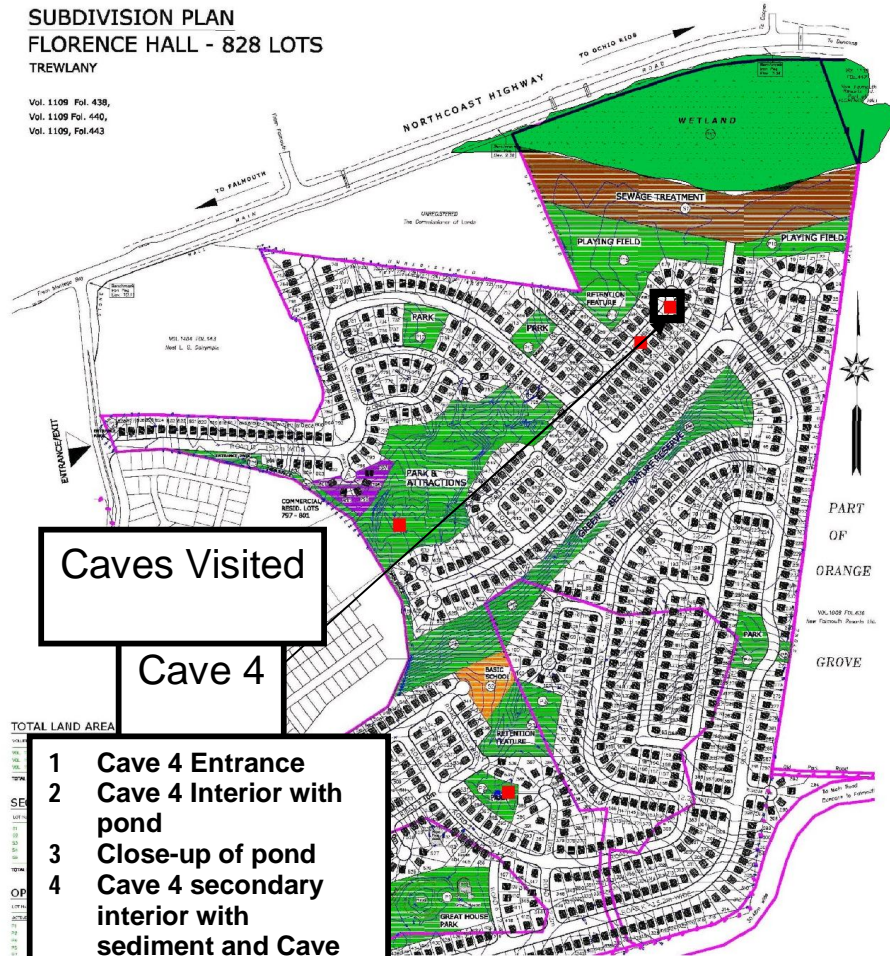
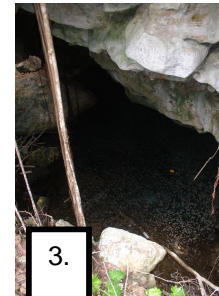
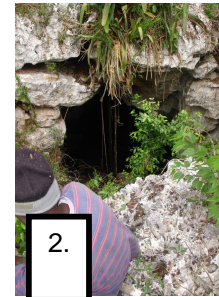
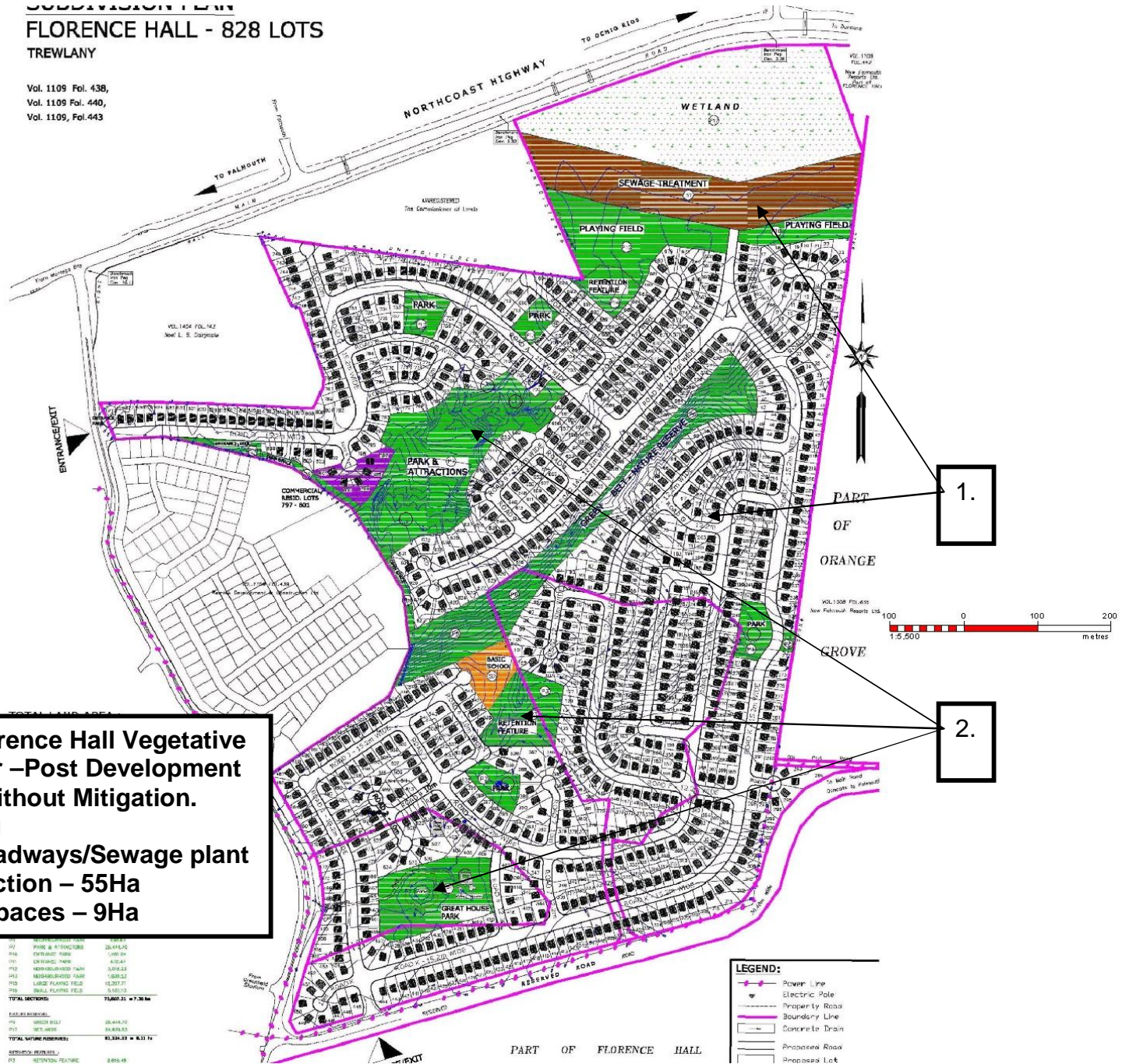


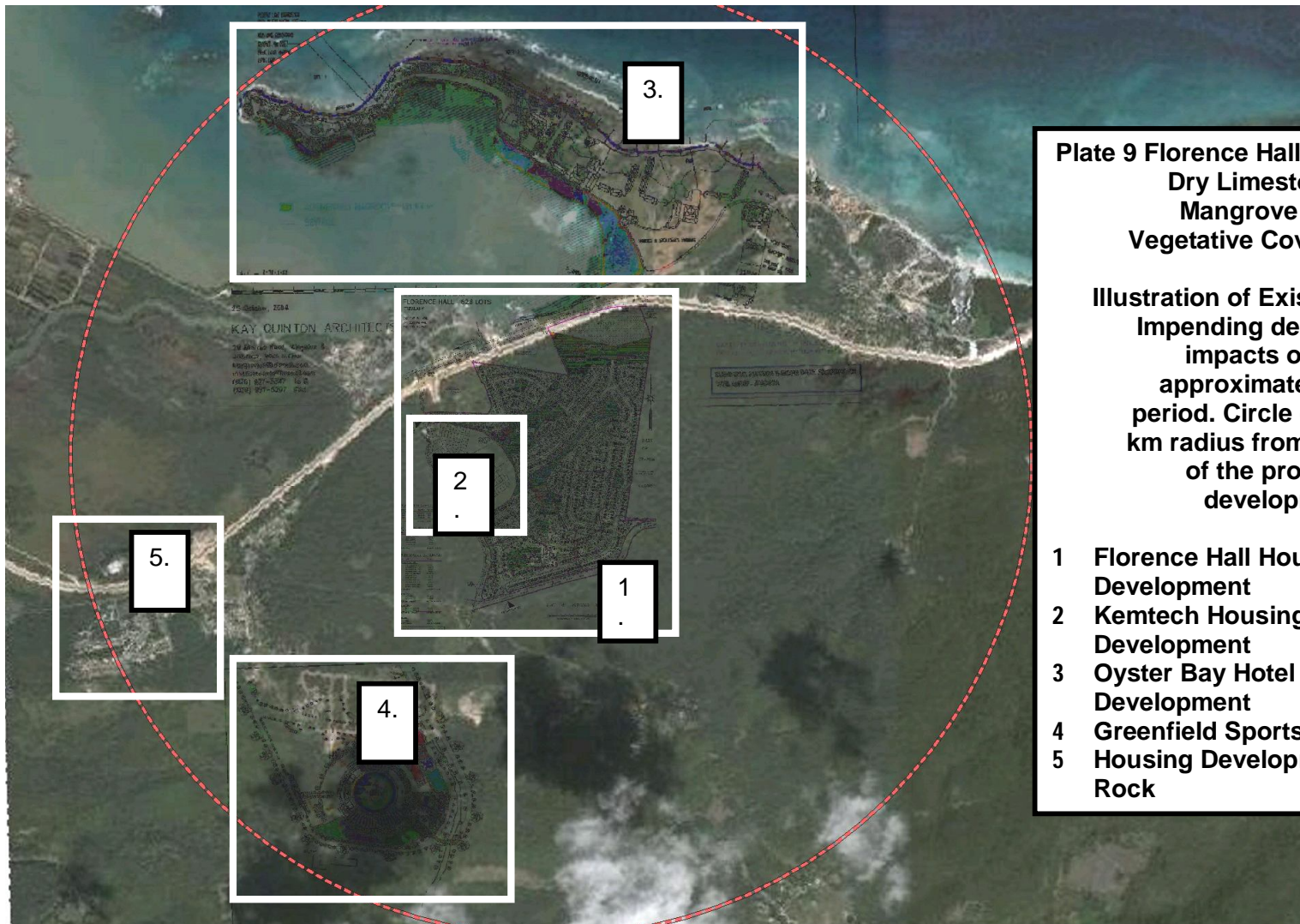
Plate 7 Description of Cave 4 on the Florence Hall property



SUBDIVISION PLAN **FLORENCE HALL - 828 LOTS** **TREWLANY**

Vol. 1109 Fol. 438,
 Vol. 1109 Fol. 440,
 Vol. 1109, Fol. 443





**Plate 9 Florence Hall Cumulative
Dry Limestone and
Mangrove Forest
Vegetative Cover Impacts**

Illustration of Existing and Impending development impacts over an approximate 10 year period. Circle defines a 2 km radius from the centre of the proposed development

- 1 Florence Hall Housing Development
- 2 Kemtech Housing Development
- 3 Oyster Bay Hotel Development
- 4 Greenfield Sports Complex
- 5 Housing Development at Rock