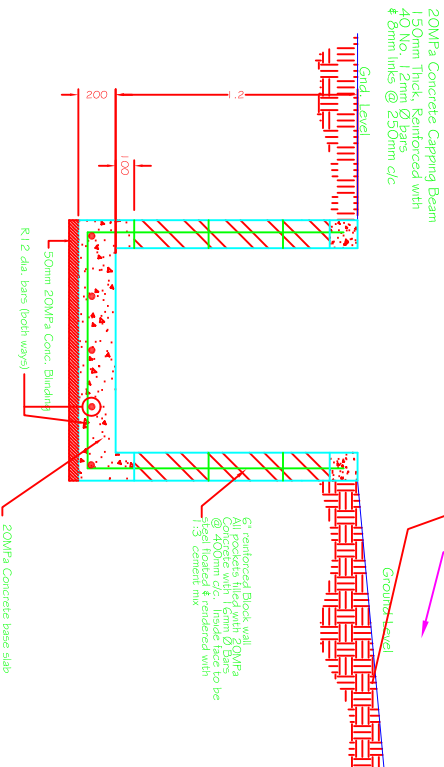



LAYOUT OF ROADS ON PROPOSED PLANT SITE



TYPICAL SECTION OF OPEN DRAIN

Not to Scale

<p>WALLACE EVANS JAMAICA LTD.  CONSULTING CIVIL & STRUCTURAL ENGINEERS 9 LENISTER ROAD, KINGSTON 5, JAMAICA, W.I. TEL: (876) 928-6812 FAX: (876) 928-6771 928-0133 E-MAIL: wallaceevans@wallaceevans.com</p>			
<p>JAMAICA BROLLERS GROUP</p>			
<p>Project PROPOSED ETHANOL PLANT AT PORT ESQUIVEL</p>			
<p>Dwg. Title LAYOUT OF ROADS & EARTH DRAINS WITHIN PLANT SITE</p>			
Scale	1:500	Date	Sept 2006
Designed	JAY/DPM	Checked	
Drawn	DPM	Approved	
Drawing No.	J1352/10	Rev.	A