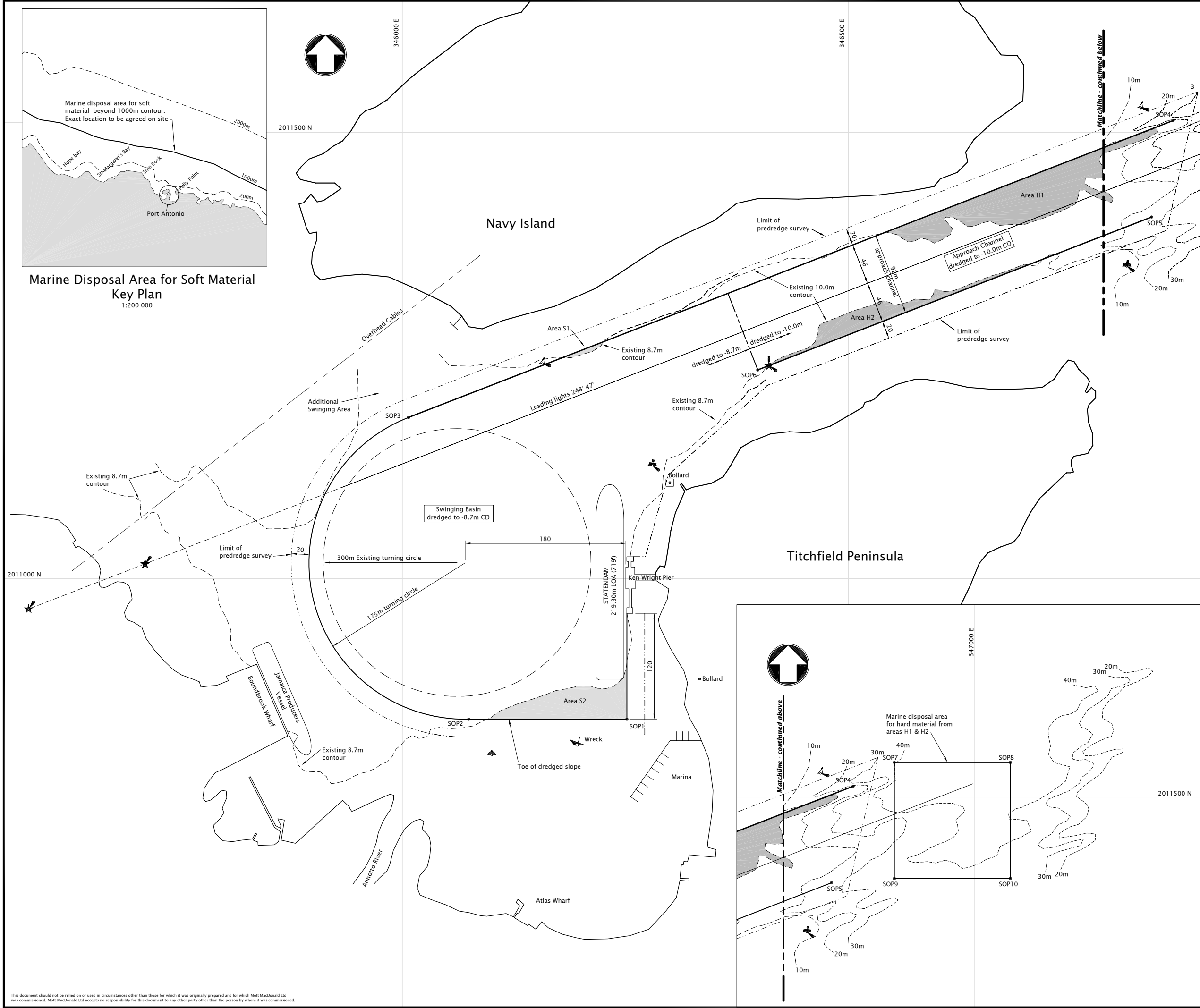


Marine Disposal Area for Soft Material Key Plan
1:200 000



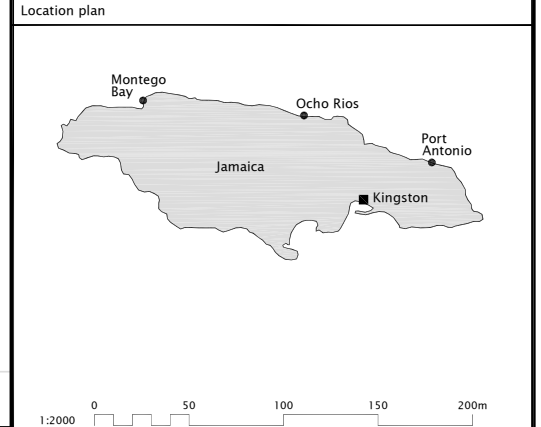
- Notes**
1. All dimensions are in metres unless shown otherwise
 2. All levels are in metres relative to Mean Low Water
 3. Contours and shoreline taken from 2001 survey chart
 4. Leading line and navigation markers taken from Admiralty Chart 458
 5. Precise alignment of leading line to be confirmed prior to commencement of works

Legend

- Approximate extent of dredging ("Hard Material") (Area H1)
- Approximate extent of dredging ("Soft Material") (Areas S1 & S2)

Setting Out Information

Setting Out Point	E	N
1	346251.5	2010842.5
2	346074.5	2010842.5
3	346007.0	2011181.0
4	346864.0	2011513.5
5	346839.5	2011405.0
6	346398.5	2011234.0
7	346910.0	2011540.0
8	347040.0	2011540.0
9	346910.0	2011410.0
10	347040.0	2011410.0



Rev	Date	Drawn	Description	Ch'k'd	App'd
P3	05.07.02		Hard material disposal area added, 10m channel dredge depth		
P2	28.06.02	PMS	Second Issue		
P1	08.04.02	PMS	First Issue		

Mott MacDonald

St Anne House
Wellesley Road
Croydon CR9 2UL
United Kingdom
Tel +44 (0)20 8774 2000
Fax +44 (0)20 8681 5706
Web www.mottmac.com

The Port Authority

10-11 Luke Street
Kingston, Jamaica
Telephone: (876) 922-0290-8
(876) 922-0940-5
Telex: 2386 - PORTOPS
Fax: (876) 924-9437

Title
North Coast Ports
Port Antonio
Dredging Works - General Arrangement

Designed	V P Crockett	Eng.Chk.	V P Crockett
Drawn	P M Starnes	Coordination	
Dwg.Chk.	V P Crockett	Approved	K W Bunker
Scale @ A1	Project	200860	Status
1:2000	CAD file	200860\020P3ANTONIO	PRE
Drawing No	200860/MAR/020		Rev
			P3

This document should not be relied on or used in circumstances other than those for which it was originally prepared and for which Mott MacDonald Ltd was commissioned. Mott MacDonald Ltd accepts no responsibility for this document to any other party other than the person by whom it was commissioned.